

COME SAMPLE A TASTE OF BLAINE

YOUR ANYTIME DESTINATION.

No matter what the season, our seaside parks, quiet beach retreats, breathtaking sunsets, open-air dining venues, quaint shops, year-round golfing and amazing places to stay... offer you the perfect anytime day-vacation or weekend get-away. Just minutes off I-5 exit 276 at the U.S./Canadian border.

WE HAVE A LITTLE BIT OF EVERYTHING & MORE!



The Rustic Fork Eatery

Italian pastas, salads, sandwiches and fire-baked artisan style pizzas.

442 Peace Portal Drive • 360-224-6174
www.therusticforkeatery.com



The Vault Wine Bar & Bistro

Extensive wine list, craft cocktails & spirits, beers & cider. Wine tasting events, Trivia Thursdays & live music Fridays.

277 G Street • 360-392-0955
www.thevaultwine.com



Drayton Harbor Oyster Company

Freshest Oysters Around
From OUR Farm to YOUR Table

685 Peace Portal Drive • 360-656-5958
www.draytonharboroysters.com



Marine Park Playground 300 Marine Drive
A seaside nautical themed playground with public restrooms and WiFi.



Semiahmoo Resort - Golf - Spa

A casual northwest beach resort with seaside dining at Packers Kitchen + Bar.
9565 Semiahmoo Parkway • 360-318-2000 • www.semiahmoo.com

START PLANNING YOUR ANYTIME DESTINATION, VISIT BLAINEBYTHESEA.COM

BLAINE WELCOME CENTER | 546 Peace Portal Dr. | Blaine, WA | 360-332-4544



 
#BLAINEBYTHESEA

THERE'S A LOT TO CELEBRATE IN BLAINE

Photo: ©Ruth Lauman

COME CELEBRATE WITH US. The US-Canadian border has re-opened, and the Peace Arch is celebrating its centennial year. When heading north or south, Blaine's perfect for a quick stop-over or weekend retreat. We're the ideal spot for year-round family-fun, outdoor activities, great food, fun entertainment, and unique downtown shopping experiences. And, of course, take in one of our famous seaside sunsets, waterfront parks, and quiet beach retreats. So, stop in to celebrate with us. We're just minutes off I-5 exit 276!



The Gateway 1890 Taproom & Grill

Over 40 craft beers on tap, Fish & Chips, Monster Burgers, International "twist" small plates.

429 Peace Portal Drive
www.gateway1890taproom-grill.com



Drayton Harbor Oyster Company

Freshest Oysters Around
From OUR Farm to YOUR Table

685 Peace Portal Drive • 360-656-5958
www.draytonharboroysters.com



The Vault Wine Bar & Bistro

Extensive wine list, craft cocktails & spirits, beers & cider. Wine tasting events, Trivia Thursdays & live music Fridays.

277 G Street • 360-392-0955
www.thevaultwine.com

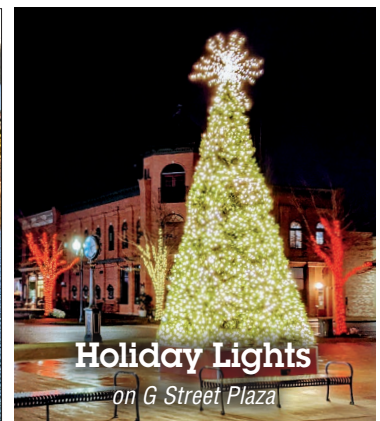


The Vigil on H Street Plaza



Semiahmoo Resort - Golf - Spa

A casual northwest beach resort with seaside dining at Packers Kitchen + Bar.
9565 Semiahmoo Parkway • 360-318-2000 • www.semiahmoo.com



Holiday Lights
on G Street Plaza

EXPLORE. EXPERIENCE. TASTE. CELEBRATE THE SEASON AT BLAINEBYTHESEA.COM

CHECK OUT BLAINE'S ENTERTAINMENT AT WWW.BLAINEBYTHESEA.COM/ENTERTAINMENT

BLAINE WELCOME CENTER | 546 Peace Portal Dr. | Blaine, WA | 360-332-4544

BLAINE
BLAINEBYTHESEA.COM

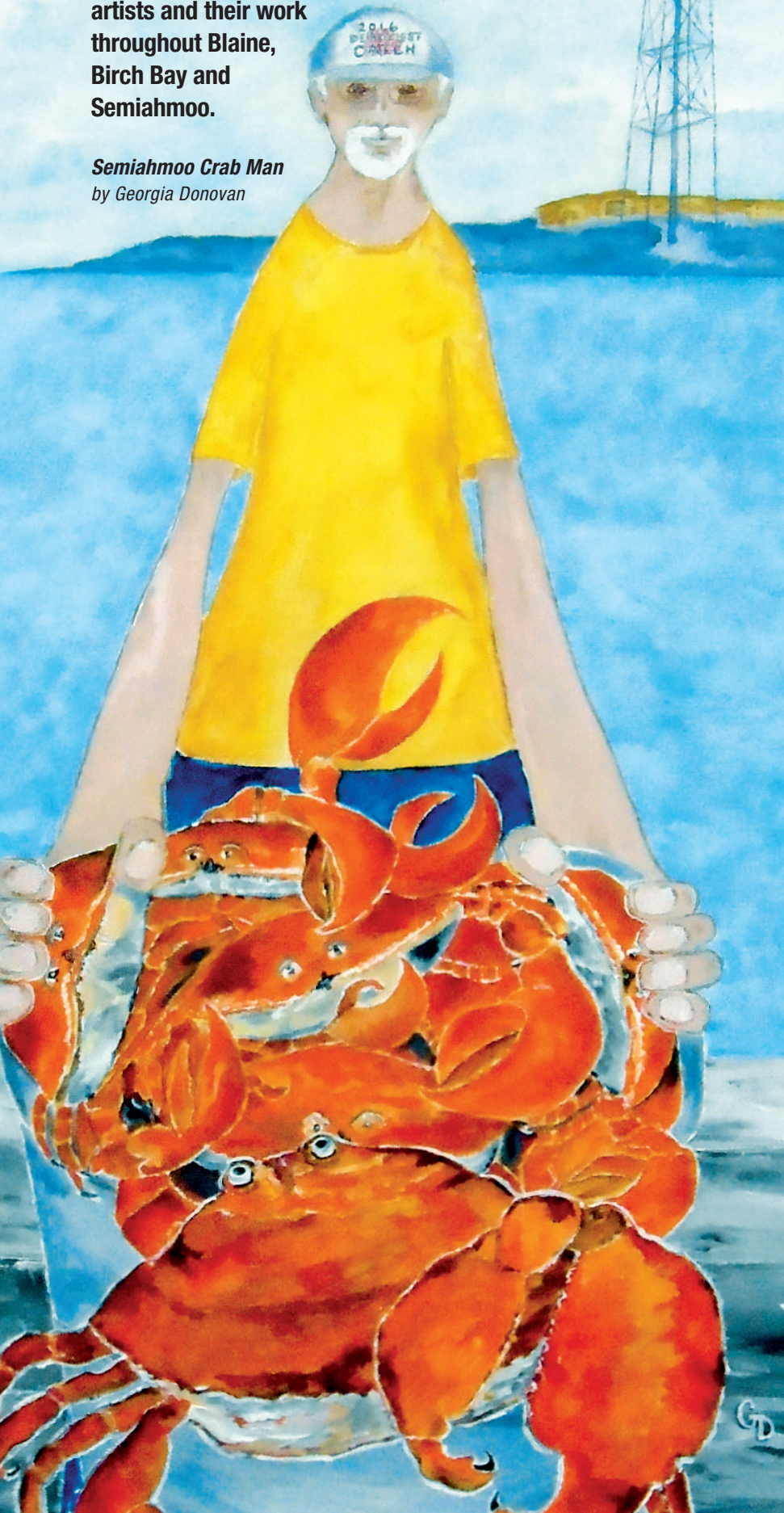
 
#BLAINEBYTHESEA

Blaine Art Studio Tour 2022

April 30 • May 28 • June 25

An exciting event showcasing local
artists and their work
throughout Blaine,
Birch Bay and
Semiahmoo.

Semiahmoo Crab Man
by Georgia Donovan



Explore. Experience. Taste.

BLAINE BY THE SEA!

Sample some culinary delights ...



Gateway1890 Taphouse & Grill

429 Peace Portal Drive
360-933-4818

20 Westcoast beers/ciders on tap
Over 30 international beers
Fish & Chips • Tower Burger • Unique
menu items for all ages.

www.gateway1890taphouse-grill.com



The Vault Wine Bar & Bistro

277 G Street
360-392-0955

Extensive wine list, local craft beer and
craft cocktails. Northwest Fusion Cuisine.
Family friendly. Live music.
Outdoor seating.

www.thevaultwine.com



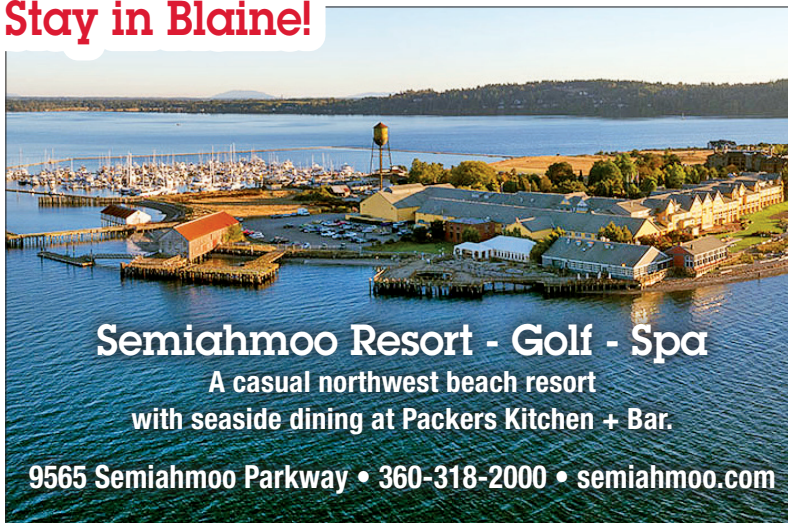
Drayton Harbor Oyster Company

685 Peace Portal Drive
360-656-5958

Freshest Oysters Around
From OUR Farm to YOUR Table.

www.draytonharboroysters.com

Stay in Blaine!



Semiahmoo Resort - Golf - Spa

A casual northwest beach resort
with seaside dining at Packers Kitchen + Bar.

9565 Semiahmoo Parkway • 360-318-2000 • semiahmoo.com



CHECK OUT BLAINE'S ENTERTAINMENT AT WWW.BLAINEBYTHESEA.COM/ENTERTAINMENT

BLAINE WELCOME CENTER 546 Peace Portal Dr. | Blaine, WA | 360-332-4544

[f /BLAINEBYTHESEA](https://www.facebook.com/BLAINEBYTHESEA)

WWW.BLAINEBYTHESEA.COM