

# Lynden Tribune

LEWIS FAMILY OWNED SINCE 1914

NOVEMBER 17, 2021

LYNDEN, WASHINGTON • \$1.50

## Flood ravages Whatcom County



Monday, Nooksack resident Aaron Kurashige used his drone to photograph flooding in Everson. Clearbrook Weather Station reported 3.42 inches of rain on Sunday, Nov. 14. The rain measurement for Monday, Nov. 15 was simply "flooded." (Photo courtesy Aaron Kurashige)



Monday, sandbags by the dozens were being filled at South 6th Street, in the Judson alleyway behind the Dutch Village Mall. (Bill Helm/Lynden Tribune)

### Flooding forces evacuations

Shelters set up in Lynden, Everson, Nooksack

By Brent Lindquist  
brent@lyndentribune.com

WHATCOM — About 500 people have been displaced from their homes due to flooding, the Whatcom County Sheriff's Office reported on Monday.

Lynden Mayor Scott Korthuis proclaimed an official State of Emergency during Monday night's meeting of the Lynden City Council. Lynden Chamber of Commerce Director Gary Vis reported that multiple churches in Lynden had taken displaced residents in, including North County Christ the King, Sonlight and First Reformed churches.

A news release from the Sheriff's Office reported that 280 people had moved to shelters established Monday, including the church shelters in Lynden and ones at Nooksack and Everson elementary schools.

Part of the evacuation effort

involved finding space for about 20 to 25 folks displaced from the River House apartments, located just below Lynden on Hannegan Road. Lynden Police Department officers were on hand Monday morning assessing how to tackle the situation. They ended up deciding to evacuate the first-floor residents.

North County Christ the King took in the River House residents, Vis said, and that was just part of the effort taking place county-wide. Christ the King was able to take in 80 to 100 people as the state Department of Emergency Management evacuated 100 residents from a heavily flooded Sumas.

"I was able to see a great community response, not only in the Lynden community but in our neighbors to the east, who have just been devastated from this,"

See **Flood** on A6

### Nooksack man photographs flooding community from sky

By Bill Helm  
bill@lyndentribune.com

EVERSON — Clearbrook Weather Station measured 3.42 inches of rain on Sunday, Nov. 14.

The day after? Clearbrook's measurement merely stated "flooded."

Monday, with his wife and children safely tucked away at his parents house, Nooksack

resident Aaron Kurashige used his curiosity - and his drone - to record what for many has made the 2020 Super Bowl Flood seem subtle.

Typically, Kurashige shoots photographs and records weather data as a hobby, he said Tuesday. Living in a floodplain, the homeowner has flood insurance, and likes to keep precise weather

See **Photographs** on A7



Lynden Mayor Scott Korthuis proclaimed an official State of Emergency on Monday, Nov. 15 due to flooding that has led to about 500 people being displaced from their homes. (Bill Helm/Lynden Tribune)

Visit [LyndenTribune.com](http://LyndenTribune.com) for more photographs and video



#### Weather

Thursday 44°/35°  
Friday 46°/35°  
Saturday 45°/38°  
Sunday 47°/38°

#### 42 pages • Volume CXXXIV • Number 40

Calendar • A9  
Classifieds • B5  
COVID-19 • A10  
Elections • A2

Legal Notices • B4  
Milestones • A9  
News Briefs • A6  
Obituaries • A5

Opinion • A4  
Puzzles • B6  
Sports • B1  
Weather • A2

Online content:  
Hear from prep athletes

[www.lyndentribune.com](http://www.lyndentribune.com) | [www.facebook.com/lyndentrib](https://www.facebook.com/lyndentrib)

LAMPHERE INSURANCE

113 Third Street, Lynden  
360-354-5333  
[www.jefflamphere.com](http://www.jefflamphere.com)

Will your Plan fit your needs in 2022? Go See Jeff!

• Medicare Advantage Plans • Part D Prescription Plans • Medicare Supplement Insurance Plans

Your Hometown Medicare Insurance Specialists since 2002



# 5-DAY WEATHER FORECAST

<b>Wednesday</b> 46°/37° Partly sunny, wind chill between 24-34 early.	<b>Thursday</b> 44°/35° 40% chance of rain. Light and variable wind.	<b>Friday</b> 46°/35° 20 percent chance of rain. NE wind 5-7 mph.	<b>Saturday</b> 45°/38° 30 percent chance of rain. Mostly cloudy.	<b>Sunday</b> 47°/38° Slight chance of rain after 10 a.m. Mostly cloudy.
<b>Sunrise</b> 7:22 a.m. <b>Sunset</b> 4:26 p.m.	<b>Sunrise</b> 7:24 a.m. <b>Sunset</b> 4:25 p.m.	<b>Sunrise</b> 7:25 a.m. <b>Sunset</b> 4:24 p.m.	<b>Sunrise</b> 7:27 a.m. <b>Sunset</b> 4:23 p.m.	<b>Sunrise</b> 7:28 a.m. <b>Sunset</b> 4:22 p.m.

Information courtesy of National Weather Service, Time and Date, and the Perry family.

### Pollen Watch

Trees	LOW	MODERATE	HIGH
Grasses	LOW	MODERATE	HIGH
Weeds	LOW	MODERATE	HIGH
Molds	LOW	MODERATE	HIGH

### For the Record • November

DATE	09	10	11	12	13	14	15
HIGHS	51	53	47	50	56	56	55
LOWS	41	41	42	40	44	40	50
PRECIP.	.18	.10	.15	.90	.23	3.42	•

**LAMPHERE INSURANCE**

113 Third Street, Lynden  
**360-354-5333**  
www.jefflamphere.com

# Hickman 'never had aspirations' to run for office

## Challenger more than 3,300 votes ahead of Steve Jilk for Lynden School Board seat

By Bill Helm  
bill@lyndentribune.com

LYNDEN — With close to 50% of Whatcom County's registered voters having participated in the 2021 election, voting is down from the roughly 88% who participated in the 2020 general election which provided, among other things, a new president.

This year's total, however, isn't far off the 56% from 2019, and actually, it's better than the roughly 46% voter turnout in 2017.

In Tonya Hickman's world, the only number that matters right now is 1. Or phonetically, won.

In her quest for Position 4 on the Lynden School Board, Hickman, the chal-

lenger, is ahead of Board President Steve Jilk, 5,475 votes to 2,160.

Three weeks after the Nov. 2 election - Nov. 23 - the election will be official. On Nov. 22, the Whatcom County Auditor's Office will upload the official final results.

Election Supervisor Amy Grasher explained that the Auditor's Office is "still receiving ballots to be processed daily."

As of Nov. 5, there were an estimated 24 ballots left to count, according to the Whatcom County Auditor's Office website.

According to Grasher, the number of estimated ballots left to count is "the number of ballots we have in house to process on the

day we last tabulated."

The Auditor's Office will release results again on Nov. 12 and will provide another estimate based on how many ballots the office has left in house to process.

**"School was created to teach reading, writing, arithmetic, history and science. No more, no less."**

Hickman said it is "humbling to be entrusted with the task of representing and being a voice for those who voted for you."

Hickman explained that she looks forward to spending her first year on the Lynden School Board by "engaging families in the community, getting to know staff and spend time in classrooms in our district."

"Parents need assurance that Lynden Public remains committed to their rights as parents as primary stakeholders to ensuring their child's academic success," Hickman said. "School was created to teach reading, writing, arithmetic, history and science. No more, no less."

Lynden's newest school board member admitted that until recently, she "never had aspirations of running for any elected office" and also said she was "fairly certain I will never do it again."

But she wanted to be a



Although the 2021 election is unofficial until Nov. 23, Tonya Hickman is more than 3,300 votes ahead of Steve Jilk for the Position 4 seat on the Lynden School District's governing board. (Bill Helm/Lynden Tribune)

part of the change that she wanted to see.

"I want to ensure that decisions made in the area of education are done so from the perspective of what parents and families would like to see, free from ideology that harms the minds of their children and plants ideas that portray a negative and shallow view of personhood," Hickman said. "Working with youth

is a high calling; parents entrust the school with their children for a large part of their day and have a huge influence on what is placed in their minds and thoughts. We all know thoughts have actions and actions have consequences. I want to be part of protecting what goes into the minds of a family's most precious procession."

If Hickman retains her lead, she will take over for Jilk on Jan. 1, with Jilk's last official day on the board to be Dec. 31.

In 2010, Jilk was appointed to fill a vacant position on the board. He then chose to continue running for the Lynden School Board because he "grew up in a family where education was supported and encouraged."

"I have one strong interest in mind," he said. "Supporting all of the kids that enter into our school district in getting the best education the community can provide. Whether it is curriculum, buildings, teachers. It is always about the

kids. Not about a personal desire to get something for yourself other than the satisfaction of seeing those kids learn, thrive, safely."

**Next ballot count**

With a measured 48.81% voter turnout as of Wednesday, the next ballot count will be posted by the Whatcom County Auditor at 5 p.m. Monday, Nov. 22.

However, Whatcom County Auditor's office's estimated figure of ballots to count only includes ballots currently in the Auditor's office. It does not estimate ballots that have not yet been received.

According to the Whatcom County Auditor's website, <https://results.vote.wa.gov/results/20211102/whatcom>, ballot signature and overseas ballots are not included and can be received up until the day before the Nov. 23 certification date.

Of Whatcom County's 156,982 registered voters, 76,630 ballots have been counted as of 3:30 p.m. Friday, Nov. 12.

Adding 20+ Years of Industry Experience to the LeaderOne Team!

**DAVID OHLIGSCHLAGER**  
Branch Manager, NMLS# 422225  
Phone: 360.815.1768  
Email: DaveO@Leader1.com  
Apply Online: www.DaveO.Leader1.com

CONTACT DAVE FOR ALL YOUR HOME LOAN NEEDS!

102 Grover St. - Suite #208 - Lynden, WA 98264

# Happy Holidays!

## Join us for our Holiday Kick-off!

## November 15<sup>th</sup> through November 20<sup>th</sup>

It's time for our Annual Holiday Kick-off event! Join us and get your holiday season started in style. We'll have six whole days of savings and celebration at all seven retail stores!

- November 15 – Gift Basket Drawings every 2 hours all day
- November 16 – Spend \$100 and get a \$25 Gift Card for Future Use
- November 17 – Free Giveaways
- November 18 – 30% off all apparel
- November 19 – Free Ornament with any \$50 or more purchase
- November 20 – Bag Sale!

Because it's all week long, all day long, you can shop for yourself or for that special someone without the usual crowds. It's been designed for the ultimate combination of fun, savings and social distancing in mind. Come join us!

Bring this ad to the store and receive an additional \$10 off a minimum purchase of \$50 or more on holiday decor and decorations, gifts, clothing and toys.

7 25272 73151 2

**chsnw.com**  
Everything you need for Home & Farm.

Subject to stock on hand. Cannot be combined with other coupons. Limited to one coupon per household. Valid on purchases between Nov 14 and Nov 22. Includes sale merchandise.

**ATTENTION HIGH SCHOOL-AGE PLAYERS**  
**NOT PLAYING FOR THEIR SCHOOLS**

## Northwest Youth Basketball League

Team registration is now open at [nwyouthbb.com/wp/registration](http://nwyouthbb.com/wp/registration) using code BBALL2021

Games are played Tuesday and Thursday night starting in December at Cornerstone Christian School, 8 game season + playoffs.

**EMAIL GWILLIS@CORNERSTONESCHOOL.US WITH QUESTIONS**

**Volkswagen of Bellingham**  
2200 Iowa Street  
Bellingham, WA 98229  
Tel: (360) 734-5230

### All-new Taos

Over 50 standard features, including digital cockpit

A negotiable documentary service fee of up to \$150 may be added to the Sales or CAP cost of New or Used Vehicles.

# Commercial center, truck stop planned for west Lynden

**Truck stop will have scale; three businesses already planned for center**

By Brent Lindquist  
brent@lyndentribune.com

LYNDEN — Planning is underway for new projects west of Lynden, and city planning documents reveal what's intended for these sites.

John Heystek is the project applicant for the project referred to as the Westgate Commercial Building, located at 2059 W. Main St.

According to the design review project application, it's slated to be a metal structure featuring dark bronze aluminum storefronts, described as an office, warehouse, retail and light manufacturing space.

"It's a commercial building, of course," Heystek said. So it's going to run three businesses right away off the top and then there's going to be lease space too for more tenants."

These three businesses are Northwest Electric, which Heystek owns, K&S Woodworks and Kyle Lodder, CPA.

Heystek said the permitting process has been

long and difficult, but he's excited for what the project will become.

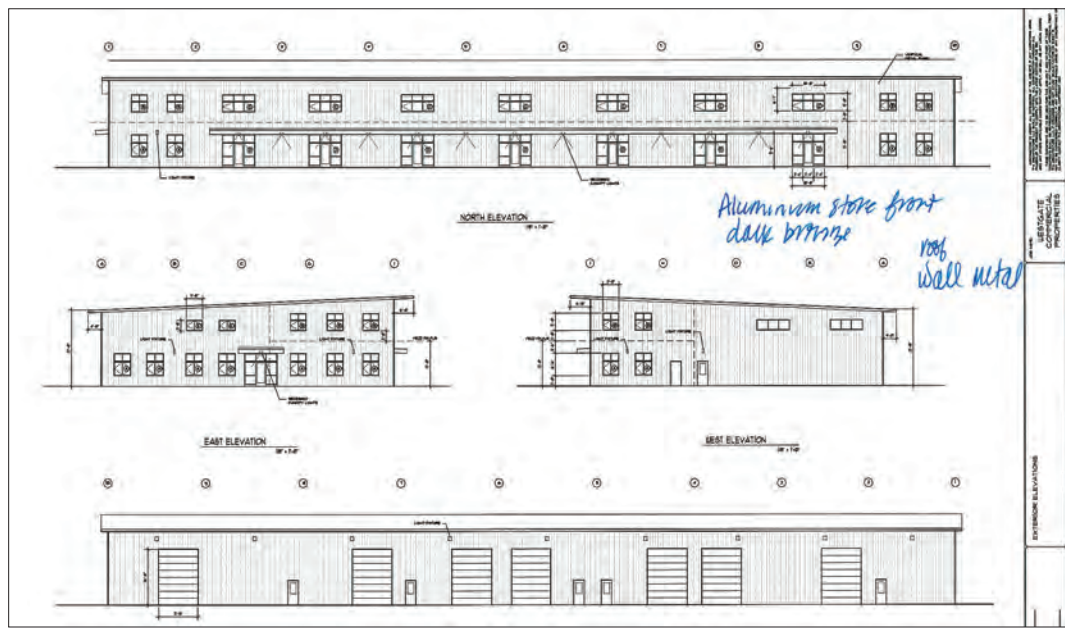
"It's a nice-looking building," Heystek said. "It's right at 24,000 square feet. It is a white metal building with dark bronze trim. All the windows, the awning and the storefronts will be dark bronze. It's all storefronts on the Main Street side and then on the south side, it's big overhead doors going to all shop space."

Heystek said he had planned to break ground on the Westgate Commercial Building project two months ago, but their plans have hit several holdups.

"We'll break ground for sure the first week of December, but we're hoping before that," Heystek said. "Within the next three weeks I'd say, we'd be breaking ground. It's been a long haul. You just never know with the times we're living in how much of a risk it is, but so far we've gotten a lot of support on it."

The other will be a Shell Station located at 8391 Guide Meridian Rd. in what will be known as Westgate Plaza.

The parcel, totaling about 5.63 acres, will



Architectural plans show what the Westgate Commercial Building will look like once it is completed. So far, three businesses are planned for the space, with room for more. (Courtesy graphic/City of Lynden)

house a convenience store, fueling station, truck scale and parking, as well as the necessary underground fuel tanks.

That's all slated for Phase 1 of development.

It's a mini truck stop, parcel owner Lakhwind Singh Malhi said. "It won't be too big. A small operation."

He said the closest scale is at the Pilot fueling station over in Ferndale, and this one will give truckers the opportunity to weigh their trucks before heading north across the Lynden border.

Phase 2 will bring two pads to be set aside on the east side of the site for a traditional fast-food restaurant (totaling about 3,500 square feet) and the other is being considered for a double drive-through coffee shop.

The third phase would deal with the west half of the site and could include speculative mixed-use retail, office or professional space, though there are no immediate plans to develop this portion, according to City of Lynden documents.

**Windermere**  
REAL ESTATE

Thinking of buying or selling this Fall?  
Contact me today, I always have time for your call!

www.KarenTimmer.com

KAREN@KARENTIMMER.COM | 360.410.0848



## Avalanche risk forces closure of North Cascades Highway

With a forecast of snow followed by warmer, wet weather, Washington State Department of Transportation has closed State Route 20 (North Cascades Highway) for the season as of Wednesday, Nov. 10.

Closure points will be milepost 134/Ross Dam Trailhead on the west side and milepost 171/Silver Star Gate on the east.

Unlike US 2 Stevens Pass and I-90 Snoqualmie Pass, North Cascades does not have facilities to perform avalanche control work to alleviate the condition.

For the safety of the traveling public and winter maintenance crews, the pass must be closed.

Travelers should still prepare for winter driving conditions as there will be active winter weather throughout the state this week.

### Why the closure?

We close the North Cascades Highway when weather, snow conditions and avalanche danger threaten the safety of drivers and our maintenance crews. Avalanches typically close the highway between late November and mid-December.

Reopening in the spring is usually accomplished by early May.

### Winter recreation on SR 20

Hikers, skiers, snowmobilers and other recreationists can access the closed portion of the highway during the winter season. Users should park in designated parking areas to allow plow drivers the space they need to clear snow around the closed stretch's access gates.

Since WSDOT closes this stretch of the highway due to avalanche risk, anyone using this area should check forecasts and be aware of quickly changing conditions in the mountains. Travelers can also check conditions with North Cascades National Park before traveling to this area.

Updates will be shared on Twitter @WSDOT\_East.

Ask About  
**SPECIAL**  
**0%**  
**FINANCING**  
**FOR 1 YEAR\***

\*Minimum new purchase of \$699 or more. On approved credit. Sale ends Monday, December 12th. No interest if paid in full with no missed or late payments by 12 month due date. Some restrictions apply. Please see store for details.

## LEATHER SALE at SAMUEL'S

**ALL LEATHER POWER RECLINING SOFA**  
**\$3499** Reg. \$4579  
*Matching loveseat and chair also on sale*

**POWER RECLINING LEATHER SOFA WITH POWER HEADRESTS**  
**\$3939** Reg. \$5129  
*Matching loveseat and recliner also on sale*

**ALL LEATHER POWER RECLINING SOFA**  
**\$3649** Reg. \$4749  
*Matching loveseat and recliner also on sale*

**ALL LEATHER SOFA**  
**\$4129** Reg. \$5369  
*Beautiful transitional style*

**THE FLEXSTEEL DIFFERENCE**

**Heart of steel.** You'll find our namesake Blue Steel Spring at the core of our upholstered seating. We believe so strongly in this support system, we guarantee its durability for a lifetime of use.

**Together to stay.** Our sturdy, precision-engineered frames are so strong, they're covered by our lifetime warranty.

**Sitting is believing.** Our plush seat cushions and extra-firm, high-resiliency seat cushions start out comfortable and stay that way. We cover them with our lifetime warranty. Our luxury cushion carries a two-year warranty.

We follow state and local guidelines to ensure the safety of our visitors at Samuel's Furniture.

**The Largest Furniture Store in Northwest Washington**  
STORE HOURS: Monday thru Saturday 10am-6pm, Sunday 11am-5pm

Be sure to visit... **SAMUEL'S** Sleep Center

# SAMUEL'S

FURNITURE • MATTRESS • LA-Z-BOY COMFORT STUDIO

1904 Main Street, Ferndale (Exit 262) • Just 10 minutes north of Bellingham  
(360) 384-3388 • www.SamuelsFurniture.com





# Flood: Shelters set up in Lynden, Everson, Nooksack

Continued from A1

Vis said. Lynden Public Works crews were able to gain access to the Lynden Community Center to obtain 10 cots to add to the supplies needed for the displaced county residents, and Jason Van Der Veen of North Whatcom Fire & Rescue came through with a variety of supplies, Vis said.

## Sandbagging efforts

Sandbagging efforts were needed as the waters encroached on people's property and residences. Monday, sandbags by the dozens were being filled at South 6th Street, in the Judson alleyway behind the Dutch Village Mall.

According to Vis, U.S. Customs & Border Patrol sent about a dozen officers to help out, and he said a Boy Scout troop and football players were among the other helpers to show up.

North County Christ the King cooked dinner for the displaced folks Monday night, and Sonlight made them breakfast

and chili for lunch. Fairway Cafe brought in meals Tuesday evening for dinner. Homestead Fitness and Torch Fitness provided shower facilities, and First Reformed shuttled people to the fitness centers so they could clean up.

Vis praised the efforts from entities and agencies around the city and county for their quick and accommodating action.

"The response has been everything we'd want," Vis said.

The Whatcom County Sheriff's Office performed extensive search and rescue efforts beginning Monday morning, including the use of a rescue vehicle and boats where water was too deep, according to a press release.

"I am extremely proud of our deputies, along with members from other agencies and search and rescue volunteers who continue to work long hours to rescue our community members," Sheriff Bill Elfo said in the release.

## Moving forward

Korthuis reported Monday night that

the flood waters were receding. Van Der Veen said in an interview with the *Tribune* Monday evening that the best way to stay safe in the coming days is to stay home as much as possible.

"The roads are pretty cut up," he said. "It's difficult to get around in a straight line from one point to another. It's been a constant battle for our crews, especially east of I-5. There's been some creative routes made up by the crews today out there in the field."

North Whatcom Fire & Rescue did perform some rescue operations, including evacuating families off Hampton Road just outside the Lynden city limits and bringing them to the shelter at Christ the King.

"In the next 12 hours, it's predicted that because we had four to six inches of rain here, the ground is significantly saturated," Van Der Veen said. "There's just nowhere for anything to go. Even if it stops raining, the impression I got is there's not going to be any relief in the next 24 hours at all. It may, in fact, get worse. Tomorrow

is a very high tide. Although it seems weird that tides tied into inland road flooding, but they are."

Van Der Veen said that that the best way to avoid getting swept away in a flood is to remember that if you can't see the road, don't cross it.

"Unfortunately many more people know that today than earlier today," he said.

Van Der Veen noted that much of the work is being done by Fire District 1 and Fire District 14, as well as Good Samaritans and community members.

As Van Der Veen spoke to the *Tribune*, he said there were 80 calls holding from people who did not necessarily need imminent rescue, but needed rescue nonetheless, and all those calls were coming from people east of Lynden who either needed evacuation from their homes or who were in their flooded cars.

"It's a rural county," he said. "We don't have all the helicopters and stuff that L.A. County has. We need people to be real safe and real conservative."



In Everson, on West 2nd and Main streets, at a home that tends to flood worse than a lot of the neighbors' homes. (Elisa Claassen for the Tribune)



At Homestead Golf Course, Depot Road, south of Badger Road. (Bill Helm/Lynden Tribune)



Dexter Cunningham of Everson with one of his cats. Cunningham and his family were evacuated from their home early Monday. (Bill Helm/Lynden Tribune)



Flooding in Lynden along Hannegan Road, just south of Front Street. (Bill Helm/Lynden Tribune)

**EVERKEPT**  
CONSTRUCTION, INC.  
Custom, Specs, and Remodels  
[www.everkeptconstruction.com](http://www.everkeptconstruction.com)  
**360-318-7699**  
Bud Ammons      Tim Wiersma

## BRIEFLY

# Gas prices risen 0.4 cents per gallon

Washington gas prices have risen 0.4 cents per gallon in the past week, averaging \$3.79/g on Nov. 15, according to GasBuddy's daily survey of 2,666

stations in Washington. Gas prices in Washington are 0.9 cents per gallon higher than a month ago and stand \$1.12/g higher than a year ago.

According to GasBuddy price reports, the cheapest station in Washington is priced at \$2.95/g, while the most expensive is \$4.29/g, a difference of

\$1.34/g. The lowest price in the state today is \$2.95/g while the highest is \$4.29/g, a difference of \$1.34/g.

The national average price of gasoline has fallen 2.6 cents per gallon in the last week, averaging \$3.40/g. The national average

is up 9.5 cents per gallon from a month ago and stands \$1.28/g higher than a year ago.

Patrick De Haan, head of petroleum analysis for GasBuddy, explained that as of Nov. 14, the national average price of gasoline posted its first weekly decline in months.

"As the price of oil continues to struggle, COVID cases flare up and anxiety over demand starts rising, motorists are likely to see the declines continuing into this week," said De Haan. "While it's not known how long market conditions will continue to push gas prices down, it appears that the fall should last through Thanksgiving, just in time for millions of Americans to prepare to hit the road for the holiday. However, the damage may already be done."

According to GasBuddy's Thanksgiving Travel Survey, a significant portion of Americans say the high gas prices already led them to re-think their plans. GasBuddy data is accessible at [FuelInsights.GasBuddy.com](http://FuelInsights.GasBuddy.com).

**WE WANT YOUR PHOTOS!**

The Lynden Chamber is interested in a variety of photos of Lynden to be used in the 2022 Lynden Chamber of Commerce Community Profile and Membership Directory.

*Businesses, people, events, activities, scenery, etc.*

Photo credit will be given for those used in the book, which is distributed widely throughout the year.

Please send submissions to [mitze@lyndentribune.com](mailto:mitze@lyndentribune.com) for consideration.

**Lynden Tribune**      **Lynden**  
CHAMBER OF COMMERCE  
LYNDEN, WASHINGTON • ESTABLISHED 1928

**Edward Jones**  
**Happy Thanksgiving**

**Brian Lydiard, CFP®, AAMS®**  
Financial Advisor  
8071 Guide Meridian Rd #104  
Lynden, WA 98264  
360-354-1121  
> [edwardjones.com](http://edwardjones.com)

**Prepare for unexpected power outages with a Generac home standby generator**

**REQUEST A FREE QUOTE!**  
**888-674-7053**

**FREE** 7-Year Extended Warranty\*  
A \$695 Value!  
Limited Time Offer - Call for Details

**Special Financing Available**  
Subject to Credit Approval

\*To qualify, consumers must request a quote, purchase, install and activate the generator with a participating dealer. Call for a full list of terms and conditions.

# Photographs: Nooksack man documents flooding community from sky

Continued from A1 records documented.

"So I've got a good idea what it translates to," he said. "Knowledge is power. Knowing and watching the weather patterns, something seemed off. It just seemed worse than the weather forecast."

Back in February 2020, Kurashige did not have a drone. But the flood of a year-plus ago "was part of the reason I got the drone," he said. "I don't use the drone much. But I purposely grabbed it from my house."

At first, he posted several aerial images of Everson under water on a neighborhood Facebook page. Then, he said, someone asked him to share the photos.

About 30 minutes of picture taking later, and several images showing much of Everson under water.

Later today, Kurashige will see how much of his home is under water.

"In 2020, there was flooding up about half-way up the driveway," he said.



Monday, Nooksack resident Aaron Kurashige spent about 30 minutes using his drone to photograph flooding in Everson. Clearbrook Weather Station reported 3.42 inches of rain on Sunday, Nov. 14. The rain measurement for Monday, Nov. 15 was simply "flooded." (Photo courtesy Aaron Kurashige)

## GETTING TO KNOW YOU

### Q&A with Peoples Bank's Kurt Kvamme

By Bill Helm  
bill@lyndentribune.com

LYNDEN — For the past 10 years, Kurt Kvamme has been in banking, the past year at the Peoples Bank financial center in Lynden.

As a mortgage loan representative, Kvamme provides financing for new home purchases, construction loans, and bare lot loans, as well as refinance existing mortgages.

"Buying or refinancing a home can be tricky, and I enjoy explaining the process and making it as effortless for my customers as possible," Kvamme said.

Born and raised in Whatcom County, Kvamme graduated from Lynden Christian High School and Western Washington University.

"I'm fortunate to serve the community where I grew up and is my home today," he said.

A Lynden resident, Kvamme didn't grow up with banking in his blood. He grew up wanting to be a golfer. He can thank his father for his love of the links.

"I have been golfing since I was 5 years old and always dreamed of going pro," Kvamme said. "While that didn't happen, golf is still one of my favorite hobbies."

As the story goes, Kvamme and his fam-



**Born and raised in Whatcom County, Kurt Kvamme graduated from Lynden Christian High School and Western Washington University.** (Courtesy photo)

ily lived at Sudden Valley Golf Course.

"My dad took me on the course and introduced me to the game by putting around on the greens," Kvamme said. "To this day, one of my favorite things to do is golf with my dad."

**Lynden Tribune:** What is your favorite thing to do when you're not working?

**Kurt Kvamme:** Spending time with my wife and two daughters. I enjoy going on walks, playing Barbies with my 5-year-old, watching movies, and playing video games with my family.

**Tribune:** Which around-the-house task is your least favorite?

**Kvamme:** Cleaning our showers and toilets are my least favorite household chores. On the contrary, my favorite chore is loading and unloading the dishwasher.

**Tribune:** What is your favorite food?

**Kvamme:** A medium-rare ribeye steak with

some mashed potatoes.

**Tribune:** What music do you have in your vehicle right now?

**Kvamme:** Anything that plays on the radio.

**Tribune:** What is your favorite sports team?

**Kvamme:** I don't want to admit this, but I don't have a favorite sports team at the moment.

**Tribune:** What's the biggest thing on your bucket list?

**Kvamme:** Play a round of golf at Augusta National.

**Tribune:** Tell us something about you that very few people know.

**Kvamme:** I enjoy cleaning and detailing cars in my spare time. I'd love to open a car detailing business in the future.

#### Weekly Q&A series

Do you know of someone in the Lynden, Everson, Nooksack or Sumas areas you'd like to see us feature in our weekly Q&A series?

If so, send an email to bill@lyndentribune.com with the name and contact

information of the person you'd like us to feature.

Also, please tell us why you'd like us to feature that person. We may quote you in the story. Thank you.

**A Smarter Way to Power Your Home.**

**REQUEST A FREE QUOTE!**

**ACT NOW TO RECEIVE A \$300 SPECIAL OFFER!\***  
1 (866) 954-2961

\*Offer value when purchased at retail. Solar panels sold separately.

*Reserve your copies of this year's Christmas Songbook & Activity Guide today!*

**4 copies for \$1**

**Call Sharon at (360) 354-4444**

# Lynden Tribune

**A NEW CAREER IS IN YOUR NEAR FUTURE**

Check out the Tribune's Classified Section for more details.

**Lynden Tribune**  
113 Sixth St., Lynden  
360-354-4444

**COUNTRY FINANCIAL**

AUTO | HOME | LIFE | BUSINESS | RETIREMENT

**Let my family help protect yours**

**Len Corneto**  
**360-354-4197**  
102 Grover St., Ste 209 | Lynden, WA 98264

0914-212

# Red Barn Market returns to NW Washington Fairgrounds

By Elisa Claassen  
for the Tribune

LYNDEN — The Red Barn Market is back, after COVID-19 closures and a week that started with intense flooding.

Kelsey Beld Tolsma owns the Muddy Waters coffee stand in Lynden with her husband Aaron. Kelsey, the event's founder and organizer, said this year's market on Friday and Saturday at the fairgrounds will be much larger than in previous years.

Tolsma, now 32, has three children and is a stay-at-home mother with extra interests and side gigs. In college she studied early childhood education and had a one year stint at a Christian college.

She didn't want to accumulate too much educational debt and found her own way into the business world.

Recently, she and her sister Brenna Beld also operated a coffee cart in a trailer at the fair, Wired Coffee. That was sold after five years.

She had worked for Muddy Waters, where she also met her future husband as a customer, before buying it in 2016 and having Brenna manage its daily operations.

Her 11-year-old Oh Snap! Photo booth business developed when she wanted one for her wedding but couldn't find one.

"I've been doing markets since 2011 or 2012," she said and added the first year was at Hopewell Grange outside of Everson called "Holiday Hoopla" with friend Katie Roosma.

When they moved the event to the fairgrounds it was initially the Whatcom Garage Sale in 2016.

One goal is to keep the costs down. Another is to have fun.

This year is slated to have more



than 85 vendors for this upcoming market -- the most they have ever had.

"We will be in two barns -- Expo and Pavilion -- and are offering classes on Friday night (Watercolor Class) and Saturday morning (wreath making).

Tickets are available online for the classes and special events or even won through radio station 106.5 FM. Visit [redbarnmarkets.com](http://redbarnmarkets.com). Friday night is the VIP night, and includes a beverage, treats and other surprises.

There will also be live music this night to enjoy. Red Barn excited to welcome Pete's Poutine for their first ever event in Lynden. They also will have more food options than ever before: Poffertjes, Waffles in Paradise, Graze and Gather and Sugar and Spice Mini Donuts.



Red Barn Market will return, Nov. 19-20 at the Northwest Washington Fairgrounds in Lynden. (Courtesy photos)

"I've always loved to plan events," she said. "When a friend and I started our own little crafting business we decided to host a craft show, and I've never stopped. It's something I really enjoy doing, plus I love that it's supporting small businesses."

Tolsma, who initially attended Lynden Christian Schools as a child, was home schooled following her mother's recovery from cancer so they could spend more time together.

Tuesday, Kelsey Beld Tolsma posted on her Facebook page that Red Barn will donate "a portion of ticket sales to those who have been affected so greatly by the flooding in Whatcom County."

"We are also compiling a list of needed items and will be collecting those at the Market to get to people who will need them," Tolsma said. "We are so thankful for this community and are looking forward to seeing you soon."

## Obituaries

Continued from A5



### Mae Thompson

Mae Louise Thompson, age 91, went to be with her Lord and Savior on Wednesday, Nov. 10.

She will be remembered for her friendly and outgoing personality,

love for decaf coffee and going on walks, as well as her dedication to the Trailblazers Ministry at North County Christ the King Church.

Mae was preceded in death by her parents, Lloyd and Janita Casteel, her brother Melvin and her sister Doris Babcock, her hus-

band Glen Beeson in 1982, and her husband Randol Thompson in 2014.

Mae is survived by her beloved son Dan Beeson, daughter in law Elizabeth née Barnwell, granddaughters Sherilyn Lipke and her husband Lyman, Savannah Far-

rell and her husband Rieley, great grandchildren Lily Farrell and Remington Farrell, and sister Jean Warren.

A celebration of life will be held at a later date. Funeral arrangements are entrusted to Gillies Funeral Home and Cremation Services.



Solar installation at Taylor Dock in Bellingham

**We're reducing emissions from our electric supply to net zero by 2030.**

**TOGETHER, we can go beyond net zero carbon.**

Learn more at [pse.com/TOGETHER](http://pse.com/TOGETHER)

### Deborah Renee Kortlever-Shea



Deborah (Debbi) Renee Kortlever-Shea was born in Fortuna California on April 10, 1960.

On Nov. 1, Debbi was taken by angels into the arms of Jesus Christ her Savior.

Debbi was preceded in death by her daddy Don on May 1, 2003.

Debbi is survived by her mother JoAnn/step father Raymond Kletke.

Her beloved Husband Keith, children Pauline JoAnn/Garrett, David/Chandra, Heather/April and many cherished grandchildren.

Brother Mark Kortlever/Gayle, Sister Sherri Dupris/Dean Step Brother David

Kletke/Lien, Step sister Barbara Otonicar/Matthew, Diane Sullenberger/Todd.

Anyone who knew Debbi will remember her sense of humor, the smile, her loving and generous heart. She is sorely missed by all however we live with the Hope in Christ we shall see each other again.

Debbi's interment will be held on Dec. 2 at Greenacres in Ferndale. Family only. There will be a celebration of Debbi's life later in the spring.

Debbi's verse that carried her through many years of suffering with MS: Isaiah 40:31 "But they that wait upon the LORD shall renew their strength; they shall mount up with wings as eagles; they shall run, and not be weary; and they shall walk, and not faint."

In lieu of flowers, please consider a donation to the MS society or Hospice.

**What if everyone in our community had what they needed to thrive?**

**We intend to find out. Want to help?**



Connect here. Thrive. [whatcomcf.org](http://whatcomcf.org)

**CELEBRATING 25 YEARS**



# Community Calendar

We gladly accept submissions for the calendar section of our newspaper. Priority will be given to educational, cultural or recreational events open to the general public sponsored by non-profit, civic, charitable, fraternal or educational organizations. All submissions are subject to review and included at editor discretion as space allows. We reserve the right to edit for content and clarity. Submissions **should not exceed 150 words and include contact information**. Please submit event information at least **10 business days** before your event date at [www.lyndentribune.com](http://www.lyndentribune.com) or by emailing [editor@lyndentribune.com](mailto:editor@lyndentribune.com). Space is limited and we cannot guarantee placement from week to week. If you would like information on purchasing advertising space, please contact our advertising team at 360-354-4444.

## Holiday North County Market

From noon-8 p.m. Dec. 6-7, the Holiday North County Market will be held at Herb Niemann's Steak House, 203 W. Main St., Everson. Free cookies and cider to all shoppers. It's a great way to do your Christmas shopping and keep your money local.

## Womens Work Holiday Market

Annual Womens Work Holiday Market. Handmade and fair trade gifts. Join us in our new location at St Paul's Episcopal Church, 415 S. 18th St., Mount Vernon, from 11 a.m. until 5 p.m., Saturday, Nov. 27. Any questions, [nosweat27@frontier.com](mailto:nosweat27@frontier.com).

## Parkinson's support group

Newly diagnosed with Parkinson's disease? You are not alone. Get involved with the local Parkinson's community which meets at 10 a.m. the first Thursday of each month at the Lynden Community Center, 401 Grover St. Call Virgi Diephuis at 360-354-1137 or Tina Navis at 360-510-8024 for more information.

## Ebenezer Christian's Annual Wreath Sale

Wreath sale, bazaar and fundraiser from 9 a.m. until 1 p.m. Saturday, Dec. 4 in the Ebenezer Christian School gym. Beautiful, handmade wreaths, centerpieces with fresh greenery, and colorful poinsettias. Ebenezer Christian School is at 9390 Guide Meridian Road, Lynden. Call 360-354-2632 for more information.

## Flu Shot Clinic at Lynden Community/Senior Center

Flu Shot Clinic at Lynden Community/Senior Center, 10 a.m. until 2 p.m. Thursday, Nov. 18. The Lynden Community/Senior Center has partnered with the Lynden Safeway Pharmacy to offer a flu shot clinic at the Center for your convenience. The Lynden Community/Senior Center is at 401 Grover St., Lynden. Call 360-354-2921 for more information.

## WA Small Fruit Conference & Ag Show

This year's Washington Small Fruit Conference & Ag Show is Dec. 1-2 at the Northwest Washington Fairground 1775 Front St., Lynden. Register now at [pheedloop.com/register/wsf2021/attendee](http://pheedloop.com/register/wsf2021/attendee). Eight WSDA Pesticide credits are available in topics including:

- Honeybee Mapping
- SWD Management
- Double Cropping
- Blueberry Viruses
- Preventing Wild Buckwheat
- Spot Spray Technology

Visit [pheedloop.com/wsf2021/site/home](http://pheedloop.com/wsf2021/site/home) for more information.

## Whatcom Museum's Deck the Old City Hall

After missing out on last year's holiday festivities due to the COVID-19 pandemic, the Whatcom Museum will offer its beloved Deck the Old City Hall to the community. This holiday celebration features more than a dozen themed, decorated trees in the Rotunda Room of Old City Hall, as well as weekly art activities to bring creativity to

the holiday fun. Visitors can see the trees from noon-5 p.m. Thursdays through Sundays from Nov. 26 to Jan. 2, 2022.

The themed holiday trees will be decorated by community volunteers and Old City Hall will be decorated in garlands and wreaths. Visitors are also invited to visit on Saturdays in December for a drop-in holiday activity. Led by a museum educator, supplies will be provided, and participation is by donation. Visitors can take a family portrait with props at a photo booth on Dec. 4, create origami trees on Dec. 11, or make a paper wreath on Dec. 18. All activities are drop-in from noon-4 p.m. and suitable for all ages. Admission to Deck the Old City Hall is by donation, including holiday craft activities. Proceeds help support the Museum's exhibitions and programs throughout the year. For more information about exhibitions and admission visit, [whatcom-museum.org](http://whatcom-museum.org).

## Rudolph the Red-Nosed Reindeer

Come join Lynden's Claire Theater for Rudolph the Red-Nosed Reindeer, live on stage, weekends from Nov. 26-Dec. 12. "Rudolph the Red-Nosed Reindeer" is an adventure that teaches us that what makes you different can be what makes you special. Showtimes are Nov. 26-28, Dec 2-5 and Dec. 9-12. Evening shows at 7:30 p.m., matinees at 2 p.m. Tickets are available online at [TheClaire.org](http://TheClaire.org) or by phone: 360-354-4425 beginning Nov. 16. Call Tuesdays or Thursdays from 1 p.m.-3 p.m. only. Tickets are \$15 for adults, \$13 for seniors (ages 65 and

older) and students, \$11 children ages 9 and younger. Out of consideration for all our patrons, no children under age 3 in the theatre please. Due to recent changes and guidance from the CDC, we will ask everyone who enters the theatre to mask up regardless of vaccination status. Exemptions will be honored. Thanks for keeping our theatre open and healthy. The Claire Theater is at 655 Front St. Call 360-354-4425 for more information.

## Lighted Parade applications now available

Treat yourself to a dazzling display of lights at Lynden's 31st annual Edaleen Dairy Lighted Christmas Parade, at 6 p.m. Saturday, Dec. 4. Parade applications are now available at the chamber office, 518 Front St., or at [lynden.org](http://lynden.org). Applications are due Monday Nov. 29. There is no charge for chamber members or non-profits. For more information, call the Lynden Chamber of Commerce at 360-354-5995.

## Community Event/ Handmade Vendor Market

Red Barn Holiday Market is back at the Northwest Washington Fair Grounds Nov. 19-20. More than 90 local handmade/vintage vendors. Friday VIP tickets are \$20 which includes a beverage, snacks, and other fun things. Tickets are available at Facebook: Red Barn Market Events. Saturday is \$5 admission, 12 and under free. Hours are 4 p.m. until 9 p.m. Friday, 10 a.m. until 4 p.m. Saturday.

## MILESTONE BIRTHDAY: RON CRABTREE, 80TH



Friends, family, co-workers, etc., please stop by to wish Ron Crabtree a happy birthday and have a piece of cake between 1-4 p.m. on Saturday, Nov. 27 at the Lynden KOA Clubhouse, 8717 Line Road. No gifts, only smiles and memories please.

**Taste of Whatcom**

**Bella Marina**  
FOOD & SPIRITS

DINE IN/TAKE OUT  
Tues.-Sat. 12 pm to 9 pm  
Closed Sun. & Mon.

[www.nickisbellamarina.com](http://www.nickisbellamarina.com)

2615 South Harbor Loop Drive  
Bellingham, WA 98225  
360-332-2505

**Shots Espresso**

119 E. Smith Rd., Bellingham  
M-F 4:30am-7pm  
Sat. 5:30am-7pm, Sun. 6:30am-7pm  
(360) 398-9239  
Find us on Facebook

**This isn't your average Golf Course Eatery.**

**9 NINE**  
Restaurant

50% Capacity Seating & Patio Open!

205 W. Smith Road, Bellingham  
360-398-8300 • Open 8 am daily

**Recreational Marijuana Shop**

Top Quality **CHEAP WEED** & Huge Selections of **CBD**

\$12 Dabs

\$5 Grams

CBD Oils

CBD Tinctures

**On the Guide, Just South of Wisner Lake!**

7157 Guide Meridian #3, Lynden, WA 98264 – 360.868.6493

Facebook.com – StarOutlet420      Open Daily:  
Instagram.com/staroutlet      9am – 11 pm

\*This product has intoxicating effects and may be habit forming. Marijuana can impair concentration, coordination, and judgement. Do not operate a vehicle or machinery under the influence of this drug. There may be health risks associated with consumption of this product. For use only by adults twenty-one or older. Keep out of the reach of children. Marijuana Products may be purchased or possessed only by persons 21 years of age or older.

## 2021 ReadersCare Fund

The Lynden Tribune is excited to once again give our readers the opportunity to join us in helping those families and individuals most in need during this holiday season. This year we have selected these grant recipients; **Project Hope Lynden Food Bank, Nooksack Valley Food Bank, and Lynden Community Center**. These wonderful organizations provide invaluable services to our communities and we are glad to do our part.

This year we are again proudly partnering with the **Mount Baker Rotary Foundation**. For each gift, a 'thank you' letter will be provided to each donor acknowledging the tax deductibility of their gift. The Lynden Tribune covers all the administrative costs of the program so that 100% of each gift to the Fund is passed along to these organizations. Thank you for your time and consideration; we hope you'll join us in our 16th annual Readers Care Fund effort this year.

Sincerely, *Michael & Mary Jo Lewis*  
Publishers

Administered by:  
**Lynden Tribune**

**Thank you to those who have donated to the 2021 Readers Care Fund so far!**

Larry & Marlene Jackson Thea Mancha John & Susan Shuhler Patricia Zuidmeer Dane & Ina Bonsen Doug & Lauren Palmer Gerrit Kuiken	Tremaine Family Cheryl & Dehaan Marlene Piper Lynn & Sharon Templeton
---	--

**GOAL: \$17,500**

As of November 16, 2021

## 2021 ReadersCare Fund

To give to the Lynden Tribune Readers Care Fund, fill out this form and mail it in or drop it off at our office!

Name: \_\_\_\_\_

Address: \_\_\_\_\_ City: \_\_\_\_\_

State: \_\_\_\_\_ Zip: \_\_\_\_\_ Phone: ( ) \_\_\_\_\_

Cash     Check     Visa     Mastercard     American Express

Credit Card # \_\_\_\_\_ Exp: \_\_\_\_/\_\_\_\_ CVV: \_\_\_\_\_

Signature: \_\_\_\_\_

Amount:     \$25     \$50     \$75     \$100     Other \$ \_\_\_\_\_

I hereby give the Lynden Tribune permission to print my name in a Thank You ad as a donor to this cause. Only my name will be printed, not the amount of my donation.

Make checks payable to: 2021 Tribune Readers Care Fund  
Mail to: Readers Care Fund, P.O. Box 153, Lynden, WA 98264

Thank You for Your Support! Lynden Tribune

# Saying 'thank you' to Lynden-area veterans



VFW Post 9301, located in Lynden, proudly serves the surrounding community. Thursday, Nov. 11, VFW Post 9301 said 'thank you' to the area's veterans with a special Veterans Day remembrance that included presentations by various community groups. Post 9301 also conducts services for Memorial Day and Armed Forces Day, participates in local parades, and holds memorial services for all veterans in the community. Visit [LyndenTribune.com](http://LyndenTribune.com) for a gallery of photographs and a video. (Bill Helm/Lynden Tribune)

## COVID case rates high in north county; Lynden, Nooksack Valley rates higher than rest of county

By Brent Lindquist  
brent@lyndentribune.com

WHATCOM — Looking at data from the first week of November, COVID case rates remained high in Whatcom County, specifically in Lynden and Nooksack Valley.

The Whatcom County Health Department report-

ed 440 COVID-19 cases for the week of Nov. 1-6, with about 63 new probable or confirmed cases per day countywide. The 14-day case rate was 397 per 100,000 people, or 906 total cases over the course of 14 days.

Lynden's relatively high case rate decreased to 367 cases per 100,000 after

high recordings in recent weeks. For comparison, Lynden was at 470 cases per 100,000 on Oct. 30.

The Nooksack Valley area saw an increased number of cases relative to its small population, recording an upward trend and a high case rate at 397 cases per 100,000. All other areas besides Lynden and

Nooksack Valley recorded numbers of 200 cases per 100,000 or below.

Cases in school-age children are at 29% of the total cases for the reporting week, and cases in kids ages 5 to 17 remain higher than any other age group. The case rate in this age group is highest in Nooksack Valley, while it decreased in Lynden but remains high.

Hospitalizations remain high, according to the health department, but the trend is downward, with 27 hospitalizations in the reporting week, down from 35 the previous week. Twenty-two of these hospitalizations were unvaccinated people. The number of hospitalizations has decreased in residents 65 and older.

The hospitalization rate was nine times higher among unvaccinated residents. One death did occur during the reporting week, a vaccinated male age 70-79.

As of Nov. 8, 67.3% of all Whatcom County residents have started vaccination and 62.2% have finished. Vaccinations are now available for kids ages 5 to 11, but data regarding that age group was not available as of press time.

State Secretary of Health Umair A. Shah said in a recent Washington State Dept. of Health brief-

ing that the state recently hit a major COVID vaccination milestone.

"We have hit 10 million doses of COVID vaccines that have been given across the state of Washington, and we are so, so incredibly excited about this," Shah said. "This is an amazing milestone."

However, Shah said the state remains in a difficult place as COVID numbers remain higher than they want to see.

Dr. Scott Lindquist, the state epidemiologist for communicable diseases, said most age groups have seen their COVID hospitalizations decrease, but occupancy in hospitals remains high, especially due to the current respiratory virus season in which viruses other than COVID-19 tend to flourish.

"Our kids are tending to have very high cases rates," Lindquist said. "We've seen 7,400 cases related to kids."

The rates in northeast Washington remain very high, Lindquist said, and variants such as the prevalent Delta variant are seen all over Washington.

The breakthrough case rate among vaccinated people is steady, Lindquist said, totaling to about 69,000 total cases, less than 1.5%.

People age 12 to 34 are five times more likely to get

COVID-19 if they are unvaccinated, and unvaccinated people are 30 times more likely to be hospitalized, Lindquist said.

Shah said that, as of the Nov. 10 briefing, 347 new deaths had been added since two weeks prior.

"We are not out of this pandemic," Shah said. "We are still having far too many people testing positive, far too many people getting hospitalized and far too many people losing their lives in our state from this virus that now is largely a preventable disease."

Also in the two weeks leading up to the briefing, Shah said, half a million doses of vaccines had been administered. Michelle Robertson, acting assistant secretary of health with the state Dept. of Health, reported that, as of Nov. 8, 79.6% of the population age 12 and older have received at least one COVID vaccine dose and 73.5% are fully vaccinated.

Shah likened the fight against COVID to a race that must be won.

"This continues to be a race against a virus," he said. "The virus is doing what viruses do. It's taking people on. And if you want to protect yourself, you have to fight back by getting vaccinated, wearing your mask and doing all the things that we've been talking about."

35 LUXURY ROOMS    MEETING ROOM    SHOPPING & DINING

## COMFORT & JOY

HOLIDAY SPECIAL

**This Holiday Season, Give a Getaway!**

Call to purchase a \$200 gift card and receive \$50 to spend at any of the five unique shops that share our historic building.

## The INN AT LYNDEN

www.innatlynden.com    100 5th Street, Lynden, Washington    360/746-8597



## BATTERY POWER. MADE BY STIHL.

**Dive headfirst into fall with easy-to-use tools.**

The AK Homeowner Series delivers a range of reliable tools you need to run strong from start to finish.

AK

SERIES

STARTING AT

\$199<sup>99</sup>



Includes tool, battery and charger.

**REAL STIHL. FIND YOURS.**

 <p><b>TRIMMERS</b> STARTING AT <b>\$139<sup>99</sup></b></p>	 <p><b>BLOWERS</b> STARTING AT <b>\$139<sup>99</sup></b> </p>	 <p><b>CHAIN SAWS</b> STARTING AT <b>\$189<sup>99</sup></b> </p>
--	---	---

\*A majority of STIHL gasoline-powered units sold in the United States are built in the United States from domestic and foreign parts and components.

**Lynden**  
**ACE Hardware - Lynden**  
1736 Front Street  
360-354-2291  
[acehardwarestore.us](http://acehardwarestore.us)

**Lynden**  
**Papé Machinery**  
830 Evergreen St  
360-354-2186  
[papemachinery-lynden.com](http://papemachinery-lynden.com)



STIHLDEALERS.COM



**CROSS COUNTRY**

## State championship results

By **Connor J. Benintendi**  
connor@lyndentribune.com

PASCO - The cross country season came to a close on Saturday, Nov. 6, at Sun Willows Golf Course in Pasco, Washington.

Student-athletes from multiple schools around Whatcom County competed in the state championship races, with some posting impressive times.

A round-up of 1A, 2A and 3A results are below.

**1A**

**Boys 5,000 Meters:**

Lakeside took home the state championship for the 1A boys, as Riverside's Jamar Distel finished

first overall in the race.

Leading the pack for the Whatcom County 1A schools was Lynden Christian junior Andrew Luce who finished sixth overall with a time of 16:39.8.

LC didn't qualify as a team since Luce was their only runner, though it was an impressive outing for the junior while representing the Lyncs.

Meridian placed ninth as a team, sending seven runners to the event. Trojans senior Gary Rempp placed 40th (17:52.4) and sophomore Braxton Ashmore placed 45th (17:58.5), rounding out the team's runners in the top 50.

Mount Baker's lone runner,

senior Finley Bell, placed 80th out of the 159 total runners with a time of 18:25.8.

Other notable placements:

67th - Conner Tenkley, junior, Meridian, 18:14.7

74th - Ian Forbes, sophomore, Meridian, 18:20.4

86th - Nolan Jacoby, freshman, Meridian, 18:30.0

112th - Willem Nichols, sophomore, Meridian, 18:50.6

143rd - Ryan Rempp, sophomore, Meridian, 19:40.3

**Girls 5,000 meters:**

Meridian senior Kayla Aalpoel

See **XC STATE** on B2



Runners compete in the Northwest Conference cross country meet on Oct. 20. The cross country season came to an end on Saturday, Nov. 6 with the state championship races. (Connor J. Benintendi/Lynden Tribune)

**PREP VOLLEYBALL**

## Lyncs take second, Meridian third in 1A state tournament

### Lynden Christian, Meridian each finish top three in the state following superb runs

By **Connor J. Benintendi**  
connor@lyndentribune.com

YAKIMA - Not all Cinderella stories have happy endings, and that's okay.

Lynden Christian, who was the 1A state volleyball tournament's lowest seed, placed second in state. An 8-7 team shocked everyone on their way to a championship appearance.

Meridian came into the tournament seeded sixth, and they bounced back from a gut-wrenching defeat in the semifinals to defeat No. 4 Annie Wright in the third/fourth place match.

The Northwest Conference and Whatcom County volleyball put the state on notice for two-straight days.

When the only two teams from District 1 and Whatcom County are playing in the final two games of the tournament, that's a win.

Chelan swept both LC and Meridian, making a rightful claim to the crown.

*1A State Championship: No. 16 Lynden Christian vs. No. 2 Chelan*

Before the season began, Kristy Van Egdom told her Lyncs squad that they could be the best

team in the state.

"They truly looked at me like I had lost my mind," the Lynden Christian head coach said. "Now, now they say 'okay, you were right. We thought you were crazy, thanks for believing in us.'"

LC was playing for their fourth state championship in seven years. While it didn't end the way they wanted, the Lyncs put together a run unlike anyone could have anticipated.

"All season I've said I don't care if we win or lose but I don't want to beat ourselves," Van Egdom said. "Chelan beat us. They're a great team — they hit the heck out of the ball. We served positive, we hit positive, we never turned our back on teammates. I couldn't have asked for better."

Chelan beat LC in three sets (12-25, 23-25, 21-25) to claim the



The Lynden Christian volleyball team gathers together with the 1A state volleyball second place trophy following the state championship match on Saturday, Nov. 13. (Connor J. Benintendi/Lynden Tribune)

1A crown. As Van Egdom alluded to, it was clear how good Chelan was. They swept all four of their tournament opponents which included Meridian in the semifinals and LC in the final.

The Lyncs didn't beat themselves at all. It was a battle.

LC scored the match's first point, but Chelan seized the momentum quickly. It was a dominant first set for the opposition, who won the first game by 13.

Game two was much tighter. Tied at nine early, the Lyncs embarked on a 4-1 run to take a 13-10 advantage. They led 17-15 late, however a cold stretch allowed Chelan to go up 21-19 when you least want to lose a lead.

Chelan took a 2-0 match lead after each team scored four more points. Reaching 'now or never' land down 24-15 in the third, the Lyncs made a run. They scored five straight to make it interesting.

They fell short in the comeback attempt. Chelan finally scored the match point, and it was over.

It was Van Egdom's first time coaching in a championship game, and this whole team's first state championship appearance.

"They've never felt that pressure, and I'm just proud of them for coming out and battling every

See **STATE VOLLEYBALL** on B2

**PREP FOOTBALL**



Lyncs junior running back Kade Eldridge (No. 44) had three rushing touchdowns in LC's 50-0 win over Granite Falls on Friday, Nov. 12.

(Connor J. Benintendi/Lynden Tribune)

## Lynden Christian routs Granite Falls

No. 3 LC defeats No. 14 Granite Falls 50-0 in round of 16, advances to state quarterfinals

By **Connor J. Benintendi**  
connor@lyndentribune.com

BELLINGHAM - The Lyncs made a statement on Friday evening to begin.

Lynden Christian dominated the Granite Falls Tigers in the 1A state football tournament opening round of 16.

The No. 14 Tigers made the trip to Civic Stadium to take on the No. 3 Lyncs. LC didn't waste any time proving why a 5-2 team deserved the third seed.

"You get a number, and you hope your team is that number, but you've still got to go prove that number," said Dan Kaemingk, the Lyncs' head coach. "That's your concern when your kids are a three [seed] and the other team's a 14 [seed], by just their nature sometimes high school kids don't put in the work. We put in the work."

Lyncs junior tight end-turned-running back Kade Eldridge rushed for three touchdowns, two of which came from 20-plus yards out.

"I'm excited, I'm thankful for my linemen

blocking for me and making those holes," Eldridge said. "I was able to make those cuts because of the turf, I haven't played on turf in a while."

This Lynden Christian offense continues to open up and become more effective as Eldridge gains confidence taking carries out of the backfield. When he runs well, senior quarterback Will Colwell has the passing prowess and opportunity to take the top of the opposition's defense.

"Whatever defense we're going against Kade [Eldridge] can run on, so it's awesome," Colwell said.

Things can turn ugly, and quick, for LC's opponents. That is exactly what happened tonight. The Lyncs owned a 14-0 advantage before Granite Falls even took their first offensive snap.

Eldridge's first score came from 8 yards out on the Lyncs' first drive of the game. On the ensuing kickoff, the ball hit a front-line member of the Tigers' return team, and LC recovered it.

After two chunk plays by LC, Caleb Ryan

ran in a 2-yard score on the third play of the drive. They were up two scores less than four minutes into the game.

Granite Falls went three-and-out, and the quick strikes continued for the Lyncs.

Colwell found junior wide receiver Tyler Sipma for a 46-yard catch and run that ended with him striding untouched into the endzone. That was on the first play of the drive.

With 6:42 remaining in the first quarter, it was already 21-0.

Two minutes of game clock later, Eldridge scampered 43 yards into the endzone, breaking multiple attempted tackles by the Tigers on his way. The point-after attempt went off the crossbar, so the lead grew by six.

It was 27-0 at the end of the first quarter.

The Lyncs began quarter two with the ball. After a little over a minute ticked off, Colwell tallied his second passing touchdown of the game on a 15-yard toss to senior wide receiver Jamint Hintz. The point-after was good.

See **LYNCS** on B2

**Family owned and operated**

Wishing all teams and individuals lots of luck in the post season!

**NORTHWEST PROPANE LLC**

Lynden                      Mt. Vernon  
8450 Depot Rd.      420 Suzanne Lane

Ferndale  
5494 Barrett Rd.  
360-354-4471 or Toll Free 800-254-4471

# XC State: Lynden's Kroontje first in over a decade

Continued from B1

finished second, posting an outstanding time of 18:07.4 which was just two seconds behind Seton Catholic's first-place finisher Alexis Leone.

Seton Catholic also claimed the team championship. The Trojans didn't qualify as a team since Aalpoel was Meridian's lone runner, but she certainly made good on the opportunity.

Lynden Christian had two runners at the event to round out the placements. Lyncs senior Maya Ewing placed 19th (20:18.8), and senior Katrina Luce finished 50th (21:27.8) out of the 124 total.

Meridian and LC were the only two 1A Whatcom County schools that sent runners to the event.

## 2A

### Boys 5,000 meters:

Squalicum (first), Sehome (third) and Bellingham (fourth) all finished in the top five for team scores, with the Storm winning the team championship.

Lynden didn't qualify as a team, but the three runners who attended

placed admirably.

Lions junior Kai Wolfsberg placed 54th with a time of 17:30.3. Fellow junior Caleb Schouten was close behind him at 57th (17:31.4), and sophomore Gage Ellis rounded out the hometown runners at 74th (17:46.6) out of 166 total participants.

### Girls 5,000 meters

Sehome was the only Whatcom County school that qualified as a team for the girls, and they won the whole thing.

Lynden's Emmy Kroontje, a senior, placed 33rd out of 152 total runners with a solid time of 19:33.2. Kroontje was the Lions' only runner at the event, but was also the first girls runner for Lynden at the state races in over a decade. She put forth a solid effort to go along with that.

## 3A

Ferndale sent one runner to the championships, which was freshman Katie Manly. She finished 98th out of 193 total runners, with a time of 20:54.8.

# State volleyball: Top three

Continued from A1

single point," Van Egdom said. "Just believing they could come in on Friday and shock a lot of people."

### Third/Fourth Place Match: No. 6 Meridian vs. No. 4 Annie Wright

The Trojans' run in the 1A state tournament was far from disappointing.

Meridian's last state championship was in 2004, when they were a 2A school, and they wanted it bad.

After the loss to Chel-an, head coach Shannon Claeys was tasked with bringing the team back up and getting them excited about playing for third place.

"That's still something to be proud of," Claeys said. "Obviously the state championship was the goal, but third place is pretty awesome. I'm so proud of them and how they just battled the whole day."

Meridian swept No. 4 Annie Wright (25-20, 25-20,

25-18) to finish third in the state.

The opening set was controlled by the Trojans, despite the size of their lead fluctuating.

A late 4-1 run gave them the 1-0 advantage.

In the second, Meridian led 15-8 midway through.

Annie Wright battled back, but the Trojans hung on.

Tied at 11 in the third, a 14-7 run by Meridian was enough to seal the victory. They had put the semifinals behind them and pushed forth.

It was a resilient showing by the Trojans, and a well-deserved placement in the tournament.

Sure, they lost in the semifinals, but they showed dominance against every other team they matched up against.

Outside of LC's first-round matchup against No. 1 Overlake, Meridian's road to the final was tougher — purely seeding-wise

— than the Lyncs'. That's not diminishing LC's accomplishments in any way, that's just how the bracket system works.

The Trojans won three straight sets against No. 11 Charles Wright after trailing 1-0, swept No. 3 Castle Rock and then were swept by No. 2 Chelan who swept the entire tournament en route to a championship.

Let's not put too much weight into that loss for those exact reasons.

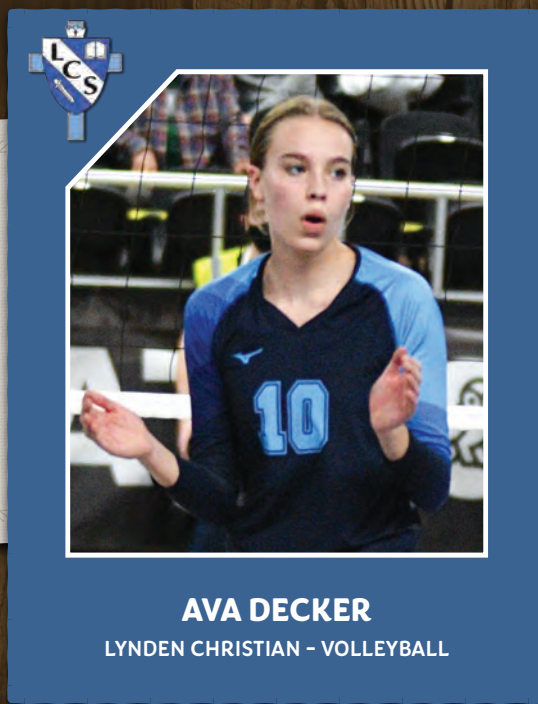
Meridian had a spectacular regular season in which they didn't lose to any of their 1A opponents.

2A Lynden and 3A Ferndale were their only two season losses.

"I'm so proud," Claeys said. "These seniors that we had, you know, [I'm] very proud of them and all the things [they've accomplished] in the past four years and longer since they've been younger playing volleyball ... they deserved to be here."

## ATHLETE OF THE WEEK

Lynden Christian's senior middle hitter **Ava Decker** put forth an incredible defensive effort in the Lyncs' state semifinal match against Annie Wright, posting 5 blocks to go along with 5 kills on offense. Decker's performance at the net helped the Lyncs advance to the 1A state championship match on Saturday evening.



**AVA DECKER**  
LYNDEN CHRISTIAN - VOLLEYBALL

Sponsored By:



Lynden Tribune  
Ferndale Record

# Lyncs: 50-0

Continued from B1

Granite Falls' defense put up some resistance, and the Lyncs' next score came with 5:12 left in the second quarter. Eldridge ran 24 yards down the sideline, hurdling a defender when he was about five yards away and got in for his third score of the game.

Following the point-after, LC led 41-0. Thus, the running clock began before half time.

The Lyncs' final touchdown of the game was just before the half, as Colwell capped off his night by tossing his third score. Ryan also got his second, as he caught the short pass from Colwell that resulted in the touchdown.

It was 48-0 at halftime.

The final points of the game were on an errant Granite Falls snap that went into their own endzone, and the recoveree was unable to exit it. The safety made it an even 50 with 3:13 left in the third.

LC would have two fumbles recovered by Granite Falls over the remainder of the game, but the Lyncs had their backups in for the whole fourth quarter. That would wrap it up.

"It feels really good, I'm thankful for the win," Eldridge said. "We're excited for the next game."

LC will host No. 6 Tenino next Saturday at Civic Stadium with a noon kickoff time.

# Hot Turkey SANDWICH

AVAILABLE DAILY IN NOVEMBER  
11AM - 11PM

## We've Got That



### THANKSGIVING DINNER

Available 11AM - Close  
Thanksgiving Day • \$17.95

Slow-roasted turkey, mashed potatoes, cornbread stuffing, giblet gravy, brussel sprouts with bacon and balsamic glaze, cranberry sauce, and a slice of pumpkin pie.



SilverReefCasino.com • I-5 Exit 260 • 360-383-0777

Visit Reef Rewards for details. Management reserves all rights.



**PREP VOLLEYBALL**

# Lions punch state ticket



The Lions celebrate as a team during their 3-0 win over Archbishop Murphy in the 2A District 1 semifinals on Wednesday, Nov. 10. (Connor J. Benintendi/Lynden Tribune)

## Lynden sweeps Archbishop Murphy in the 2A District 1 quarterfinals, clinches state berth

By Connor J. Benintendi  
connor@lyndentribune.com

BELLINGHAM - If you had told this young Lions volleyball team at the beginning of the season they would be going to state, they may not have believed you.

However, the work they have put in over the course of the season tells otherwise.

Lynden has just one senior on the roster, Mia Apps, and is predominantly led by emerging sophomores. Ashley Shumate, Haylee Koetje, Grace Rice and Mya VanderYacht are three of those sophomores fueling the engine that has propelled this Lions team to the 2A District 1 championship and a state tournament berth.

"Neither of us have ever been to state, so we're just along for the ride," Koetje said. "We're super excited."

They have proved to be the backbone of this team, and they still have two more seasons to grow.

Chris Elsner, Lynden's head coach, is equally excited about the opportunity to be a part of the state bracket.

"I'm ecstatic, I think of all the trips to state this one is so sweet coming off a year of COVID with no postseason," Elsner said. "They're young, right? There are four sophomores on the court, but yet [they are] so hungry. They love to compete."

With a sweep of the Archbishop Murphy Wildcats on Wednesday night (25-20, 25-21, 25-18), Lynden has already put together a statement season given their youth.

"We've just been working so hard all season for this," Shumate said. "So, to finally have it become a reality is so fun."

Beginning the match, it was clear the Lions were prepared. They raced out to a 20-15 lead in the first set, before trading points with the Wildcats to take the set 25-20. The second set was more of the same. Lynden served four straight points to open, but the

Wildcats began to claw back. Archbishop Murphy tied the game at 9-all in their comeback attempt. It was a short-lived effort, as the Lions gained another lead and held it the rest of the set to take a 2-0 lead.

Unsurprisingly, it was a similar game flow in the third: Once the Lions took the advantage, they never surrendered it. Lynden led 8-4 early, seeing that lead expand and contract until they held a 20-14 advantage late. They rode that lead to a 25-18 set victory and that was the match.

"I feel like everyone tonight was a super uplifting teammate towards each other," Shumate said. "I think that elevated our game and we were all just super confident."

Koetje concluded the match with a double-double, tallying 10 kills and 10 digs. Shumate totaled 10 kills and 8 digs, as Rice posted 4 kills and 24 assists. VanderYacht

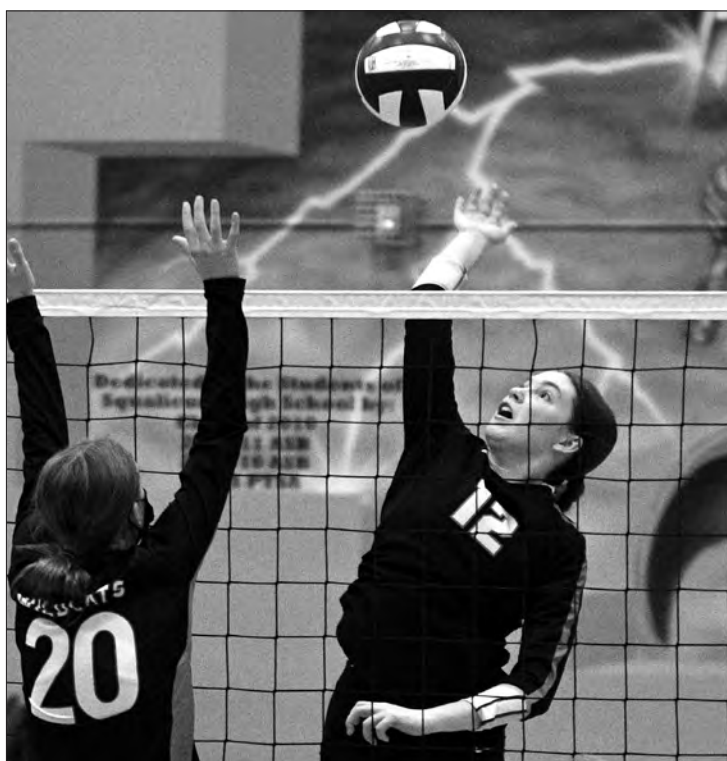
dug 12 balls on defense as well.

Junior Kayla DeJong had 2 blocks at the net and killed 5, while fellow junior Lucy White led the team with 4 aces. The Lions will play the top-seeded Burlington-Edison Tigers in the 2A District 1 championship this Saturday, Nov. 13, at Squalicum High School with a match-start of 5 p.m.

Lynden lost to the Tigers in their seventh game of the season in four sets on Sept. 29, but this is a much-improved Lions team from that point in the season.

"[Burlington-Edison is] such a well-coached team and I think it's such a great matchup especially heading into state," Elsner said. "It'll be a good battle."

Update: Lynden lost to Burlington-Edison in the 2A District 1 championship on Saturday, Nov. 13. The Lions will be the No. 6 seed of 16 in the 2A state tournament this upcoming weekend.



Lions sophomore Haylee Koetje (No. 12) finished with 10 kills and 10 digs in Lynden's 3-0 win over Archbishop Murphy on Wednesday Nov. 10. (Connor J. Benintendi/Lynden Tribune)

**SWIM AND DIVE**



Sehome and Squalicum swimmers stand at the edge of the pool during the 2A District 1 swim and dive championship meet that ran from Nov. 5-6. (Photo Courtesy of Don Helling/Squalicum swim and dive) (Photo Courtesy of Don Helling/Squalicum swim and dive)

## Swim and dive: Sehome takes first, Lynden fifth in district championship

Whatcom County schools combine for 43 state-qualifying times in 2A District 1 championship

By Connor J. Benintendi  
connor@lyndentribune.com

ANACORTES -- In a nine-team, two-day swim and dive meet from Nov. 5-6 Sehome emerged at the top of the 2A District 1 championship.

It was the first time in two years the meet has been run, and the competition did not disappoint. For team scores, Sehome finished first with a score of 350, Squalicum was third (201), Lynden fifth (89) and Bellingham sixth (84).

In total, the four schools posted 43 state-qualifying times across the 12 events. Sehome led the pack with 23, Squalicum (10) was second, Lynden (6) was third, and fourth was Bellingham (4).

Sehome's Florence Lo took home District 1 2A Swimmer of the Meet. Randy Elsner, Squalicum's head swim and dive coach, won District 1 2A Coach of the Year, which was voted on by the coaches. Elsner provided these results to the Tribune.

Results by event are below (\* denotes to state):

**200 Medley Relay:**

- 1st- Sehome - Luna Lee, Florence Lo, Ana Zurcher, Mia Case - 1:55.21\*
- 2nd- Squalicum - Lucy Truemper, Mia Eide, Avery Allison, Emma Balogh - 1:59.86\*

**200 Free:**

- 3rd- Ansley Hardy - Sehome - 2:08.34\*
- 4th- Linda Guo - Sehome - 2:08.93\*
- 5th- Paige Corkill - Lynden - 2:12.63\*
- 10th- Priya Dhaliwal - Lynden - 2:29.34
- 11th- Alexa Hulbert - Squalicum - 2:30.46

**200 IM:**

- 3rd- Jaeli Tilley - Sehome - 2:26.51\*
- 4th- Mia Eide - Squalicum - 2:26.88\*
- 6th- Kateryna Isakova - Sehome - 2:40.40
- 7th- Addy Getz - Sehome -

- 2:38.12\*
- 10th- Tatyanna Sparks - Bellingham - 2:49.93
- 11th- Rachel Jones - Lynden - 2:54.99
- 12th- Celeste Fisher - Squalicum - 2:56.80

**500 Free:**

- 1st- Emma Balogh - Squalicum - :25.70\*
- 2nd- Mia Case - Sehome - :26.03\*
- 4th- Lucy Truemper - Squalicum - :26.40\*
- 6th- Ana Zurcher - Sehome - :26.64\*
- 7th- Ella Bathum - Bellingham - :27.02\*
- 8th- Erin Lin - Sehome - :28.75
- 9th- June Wilson - Bellingham - :29.10
- 10th- Lily Skoczen - Bellingham - :29.22

**1 Meter Diving:**

- 1st- Martina Klecka - Sehome - 420.65\* - New Meet Record
- 2nd- Maddi Ferrari - Sehome - 331.60\*
- 4th- Laura Webb - Sehome - 223.30\*
- 5th- Kenna Andersen - Squalicum - 229.95\*

**100 Butterfly:**

- 1st- Florence Lo - Sehome - :58.57\* - New Meet Record
- 3rd- Ana Zurcher - Sehome - 1:06.82\*
- 4th- Jordis Darroch - Sehome - 1:09.82\*
- 6th- Luna Lee - Sehome - 1:11.04
- 7th- Avery Allison - Squalicum - 1:15.02
- 9th- Celeste Fisher - Squalicum - 1:21.88
- 11th- Kayla Bogard - Lynden - 1:25.76

**100 Free:**

- 2nd- Emma Balogh - Squalicum - :57.34\*
- 4th- Mia Case - Sehome - :58.28\*
- 5th- Linda Guo - Sehome - :59.52\*
- 6th- Paige Corkill - Lynden - :59.77\*

Full results at lyndentribune.com

# PUBLIC NOTICES

Your right to know and be informed of the functions of your government are embodied in public notices. In that self-government charges all citizens to be informed, this newspaper urges every citizen to read and study these notices. We strongly advise those citizens seeking further information to exercise their right of access to public records and public meetings.

**Lynden**

**LEGAL**  
**ORDINANCE NO. 1638**

AN ORDINANCE FOR THE CITY OF LYNDEN AMENDING ORDINANCE NO. 1571 LEVYING TAXES FOR GENERAL MUNICIPAL PURPOSES FOR TAXES COLLECTIBLE AND PAYABLE IN 2022 IN THE CITY OF LYNDEN, WASHINGTON

A complete copy of this Ordinance is available during regular business hours at the Office of the City Clerk, City Hall, 300 4th Street, Lynden, Washington. The Ordinance will be mailed upon request without cost. This publication by title is made pursuant to RCW 35A.12.160. Adopted November 15, 2021.

Published November 17, 2021

**LEGAL**

**CITY OF LYNDEN PUBLIC WORKS DEPARTMENT ADVERTISEMENT FOR BIDS PROJECT NO. 2022-01 ANNUAL SUPPLY OF ASPHALT, QUARRY ROCK, GRAVEL, SAND & TOPSOIL**

NOTICE is hereby given that sealed bids will be received by the City of Lynden Public Works Department at 300 4th Street, Lynden, Washington, 98264, (360) 354-3446, until 2:00 pm on Wednesday, December 1, 2021.

Materials to be supplied on demand within 24 hours (or within two hours in case of emergency) and delivered to within five miles of the Lynden service area if necessary. A weight slip must be submitted at time of delivery. The bid is to establish a list of suppliers and firm prices for the 2022 supply of asphalt, quarry rock, gravel, soil and fractured sand for the City. Bidders must be on the City of Lynden's Small Works Roster at time of bid due date. Award will be made to the lowest and or most responsible bidder. The City will select the supplier submitting the lowest responsible bid for the specific material needed. However, under special circumstances, the City may select the supplier not submitting the lowest bid, but in consideration of the special circumstances meet the City's requirements for the specified material needed. Special circumstances that may be considered include differences in ability to deliver, delivery time, availability of material, special loading or un-

loading conditions, total cost (including transport), performance of the delivered material, location of the source and proximity to the delivery point. Fuel surcharge must be included in bid price. The City of Lynden reserves the right to accept a proposal of the bidder submitting the lowest responsible bid, to reject any or all bids, or to re-solicit the call for bids if the best interest of the City of Lynden is served thereby.

We are an equal opportunity employer and encourage participation in this bidding process by all interested firms, including disadvantaged, minority-owned, women-owned, and emerging small business enterprises. Heather Sytsma Office Manager

Published November 17, 2021

**LEGAL**

**CITY OF LYNDEN PUBLIC WORKS DEPARTMENT ADVERTISEMENT FOR BIDS PROJECT 2022-02 CHEMICALS**

NOTICE is hereby given that the City of Lynden will receive sealed bids at the office of the Public Works Department, 300 4th Street, Lynden, WA, 98264, until 2:00

p.m. on Wednesday, December 1, 2021, for Project No. 2022-02, to furnish the following goods or services:

1. Chemical Hydrated Lime
2. Liquid Aluminum Sulfate
3. Solar Extra-Coarse Salt
4. Fluorosilicic Acid
5. Sodium Hypochlorite

Bid documents may be obtained in the Public Works Department office at the above address or online at <https://www.lyndenwa.org/public-works/pw-projects/public-works-projects/> All bids must be submitted in a sealed envelope marked with the project name and number.

The city reserves the right to reject any or all bids, or any part thereof, to waive irregularities or informalities in the bid or bidding process, and to give particular attention to the price to determine the most responsive bid. We are an equal opportunity employer and encourage participation in this bidding process by all interested firms, including disadvantaged, minority-owned, women-owned, and emerging small business enterprises. All inquiries may be directed to the Public Works Department at (360) 354-3446. Heather Sytsma Office Manager

Published November 17, 2021

**LEGAL**

**CITY OF LYNDEN PUBLIC WORKS DEPARTMENT ADVERTISEMENT FOR BIDS LAB ANALYSIS SERVICES (PROJECT NO. 2022-03)**

NOTICE is hereby given that the City of Lynden will receive sealed bids at the office of the Public Works Department, 300 4th Street, Lynden, WA, 98264, until 2:00 p.m. on Wednesday, December 1, 2021, to furnish lab analysis on drinking water, wastewater, bio-solids and compost.

Service requirements and associated documents may be obtained in the Public Works Department office at the above address. All bids must be submitted in a sealed envelope marked with the project name and number. The city reserves the right to reject any or all bids, or any part thereof, to waive irregularities or informalities in the bid or bidding process, and to give particular attention to the price to determine the most responsive bid. We are an equal opportunity employer and encourage participation in this bidding process by all interested firms, including disadvan-

taged, minority-owned, women-owned, and emerging small business enterprises.

All inquiries may be directed to the Public Works Department at (360) 354-3446. Heather Sytsma Office Manager

Published November 17, 2021

**Everson**

**LEGAL**

**CITY OF EVERSON NOTICE OF PUBLIC HEARING**

NOTICE IS HEREBY GIVEN that the Everson City Council will hold a Public Hearing on Tuesday, November 23, 2021 at Everson City Hall, 111 W. Main St., Everson, WA at 7 p.m., to consider the 2022 Final Budget. Any party may submit written or oral comments at the hearing. If you are unable to attend the public hearing in person, you may submit your written comments by 4 p.m. on November 23, 2021 to the City Clerk at P.O. Box 315, Everson, WA 98247. Copies of the 2022 Final Budget are available for

See LEGALS on B4





# Whatcom County's PROFESSIONAL BUSINESS DIRECTORY

Continued from B5

Korthuis, 9602 Double Ditch Rd Lynden, WA 98264, is seeking coverage under the Washington State Department of Ecology's Construction Stormwater NPDES and State Waste Discharge General Permit.

The proposed project, Kamm Creek PRD, is located at the west side of Northwood Rd 670 ft south of Kamm Rd in Lynden in Whatcom County.

This project involves 15 acres of soil disturbance for Residential construction activities.

The receiving waterbody is Kamm Creek.

Any persons desiring to present their views to the Washington State Department of Ecology regarding this Application, or interested in Ecology's action on this Application, may notify Ecology in writing no later than 30 days of the last date of publication of this notice. Ecology reviews public comments and considers whether discharges from this project would cause a measurable change in receiving water quality, and, if so, whether the project is necessary and in the overriding public interest according to Tier II anti-degradation requirements under WAC 173-201A-320.

Comments can be submitted to: [ecyrewqiano@ecy.wa.gov](mailto:ecyrewqiano@ecy.wa.gov), or ATTN: Water Quality Program, Construction Stormwater Washington State Department of Ecology P.O. Box 47696 Olympia, WA 98504-7696

Published November 17 & 24, 2021

LEGAL

PUBLIC NOTICE

Evans/Kenney Partnership, LLC, 13109 - 41st Avenue NE, Marysville, WA, 98271 is seeking coverage under the Washington State Department of Ecology's Construction Stormwater NPDES and State Waste Discharge General Permit for the Evans/Kenney Industrial Park, located at 4546 Wynn Road in Whatcom County, WA. This project has involved 3.8 acres of soil disturbance for commercial construction activities. The receiving water is an on-site wetland area, which flows into a tributary of Silver Creek. Any persons desiring to present their views to the Department of Ecology regarding this application, or interested in the Department's action on this application, may notify Ecology in writing within 30 days of the last date of publication of this notice. Comments can be submitted to: Department of Ecology, Water Quality Program, P.O. Box 47696, Olympia, WA 98504-7696.

Published November 17 & 24, 2021

Summons by Publication

LEGAL

IN THE SUPERIOR COURT OF THE STATE OF WASHINGTON IN AND FOR THE COUNTY OF WHATCOM

OLIVER FERNDAL PROPERTY, LLC, a Washington limited liability company, and COOPER FERNDAL PROPERTY, LLC, a Washington limited liability company, Plaintiffs, vs. Unknown Heirs and/or Devises of W H KAUFMAN, deceased, Defendants. No. 21-2-01056-37

SUMMONS BY PUBLICATION Judge: Robert E. Olson

STATE OF WASHINGTON TO: Unknown Heirs and/or Devises of W H KAUFMAN, deceased; AND TO: All other persons or parties unknown claiming any right, title, estate, lien, or interest in the real estate described in the Complaint herein, Defendants: YOU AND EACH OF YOU ARE HEREBY SUMMONED to appear within sixty (60) days after the date of first Publication of this Summons, to-wit, sixty (60) days after the 13th day of October 2021, and defend the above-entitled action in the above-entitled court and answer the Complaint of the Plaintiffs, OLIVER FERNDAL PROPERTY, LLC, a Washington limited liability company, and COOPER FERNDAL PROPERTY, LLC, a Washington limited liability company, and serve a copy of your answer upon the undersigned attorney for Plaintiffs, Lesa Starkenburg-Kroontje at her office below stated; and, in case your failure to do so, judgment will be rendered against you according to the demand of the Complaint in this action, which has been filed with the clerk of said court.

This object of this action is to quiet title in Plaintiffs to real estate located in Whatcom County, Washington, described as:

Parcel B: All that portion of the following described real property lying Southwesterly of State Route 5, Bellingham to Smith Road Vicinity, which is shown of record in Volume "A" of Highway Plats, page 155, records to said Whatcom County:

The South 298 feet of Lot 14, "Plat of Downies Addition to North Bellingham, Washington", as per map thereof, recorded in Book 3 of Plats, page 29, in the Auditor's office of Whatcom County, State of Washington.

Situate in Whatcom County, Washington.

against the claim of the Defendants and any one of them. DATED this 6th day of October 2021.

STARKENBURG-KROONTJE AT LAW P.S. LESA STARKENBURG-KROONTJE, WSBA # 21843 Attorney for Plaintiffs 313 4th Street Lynden, WA 98264

Published October 13, 20, 27 & November 3, 10, 17, 2021

**BUSINESS CENTER**

**GRANDVIEW BUSINESS CENTER**

OFFICE, STORAGE, RETAIL AND LIGHT INDUSTRIAL WAREHOUSE SPACE.  
1400 TO 9000 SQ FT AVAILABLE FOR RENT.

FOR MORE INFO CALL:  
**(360)380-2907**  
INFO@GRANDVIEWCENTER.COM  
GRANDVIEWBUSINESSCENTER.COM  
**(360) 319-5555**  
7056 PORTAL WAY  
FERNDAL, WA 98248

**EVENT SPACES**

**Lairmont Manor**

THE PACIFIC NORTHWEST'S PREMIER EVENT VENUE

**360-647-1444**  
INFO@LAIRMONTMANOR.COM  
INSTAGRAM | LAIRMONTMANOR.COM | FACEBOOK

**SHAVINGS**

**STARKENBURG SHAVINGS**

Shavings, Sawdust, Beauty Bark and Hog fuel

**360-384-5487**

**CONCRETE**

**CADMAN**  
HEIDELBERGCEMENT Group

- Ready Mix • Grout • CDF
- Colored Concrete
- Exposed Aggregate
- Pervious Concrete

**360.354.1400**  
www.cadman.com

**FARM EQUIPMENT**

**MERIDIAN EQUIPMENT INC**

PARTS • SALES • SERVICE  
Large Stock All Makes

- Starters • Alternators
- Water Pumps • Clutches
- Restoration Tires & Parts

**SPECIAL: Small Frame/Wire Alternator \$100**  
**360-398-2141**  
5946 Guide Meridian, B'ham

**TOPSOIL**

**S & W**  
Rock Products LLC

Compost • Mulches  
Topsoil Mixes  
Yard Debris Recycling

**(360) 354-4936**

**CONSTRUCTION**

**Muis Construction**

- Farm & Home Repairs & Remodel
- Concrete Work & Repairs
- Shops & Sheds
- Demolitions & Clean Ups

30 Years Experience

**360-325-5321**  
George Muis, Owner  
Lic# MUISCC\*874C1

**ROOFING**

FREE reroof estimates Over 35 yrs. experience

**MT BAKER ROOFING INC.**

**NEED A NEW ROOF?**

Serving Whatcom, Skagit & Island Counties

Lic. # MTBAKR1055ML  
**360-733-0191**  
www.mtbakerroofing.com

**TOPSOIL**

**Growsource**

Bark • Topsoil  
Compost • Rock  
**Sawdust**  
**We Deliver!**  
**360-318-8554**

To be included please call Lynden Tribune at 360-354-4444 or Ferndale Record at 360-384-1411

**CROSSWORD PUZZLE**

Team Spirit

1	2	3	4	5	6	7	8	9	10	11	12	13
14					15				16			
17					18				19			
20				21					22			
			23				24					
	25	26	27			28	29					
30					31	32			33	34	35	36
37				38			39	40				
41					42	43			44			
			45	46			47	48				
	49	50				51	52					
53					54				55	56	57	58
59					60				61			
62					63				64			
65					66				67			

CREATORS NEWS SERVICE

By Charles Preston

ACROSS

- 1 Perform
- 6 Cereal fad
- 10 Mind
- 14 Dance of the \_\_\_\_
- 15 M. Lacoste
- 16 Dairy additive
- 17 Favorite Van Gogh city
- 18 Lotion ingredient
- 19 Actress Olin
- 20 LA jocks
- 23 Cartoonist Thomas
- 24 High
- 25 Saloons
- 28 Year opener in Madrid
- 30 Gloomy
- 31 Chez Scarlett
- 33 Hungarian national hero
- 37 Creative chap
- 39 Baseball flag
- 41 Site of French Disneyland
- 42 Shade of green
- 44 Followers
- 45 Modest dwelling
- 47 Obliterate
- 49 French wine valley
- 51 Unexciting
- 53 Chicago jocks

DOWN

- 1 Food fish
- 2 Picador's prey
- 3 \_\_\_\_ lang syne
- 4 Diver Louganis
- 5 Palestinian ascetic
- 6 Nerve
- 7 Oral historian
- 8 Erelong
- 9 One-eyed thing
- 10 Raiders' home
- 11 Spokesperson
- 12 Long-legged and slender
- 13 Special times
- 21 Dreadlocks wearer
- 22 Mohammedan's reading
- 25 Symphonic ending
- 26 Master violinist
- 27 Poor Clares monk

DOWN

- 29 Glove leather
- 30 Obscure
- 32 Rival
- 34 Elway effort
- 35 Dealer's demand
- 36 Toper's woes
- 38 Stillier's partner
- 40 Incense
- 43 Wreathe
- 46 Stephen Vincent and William Rose
- 48 Knocks twice
- 49 Court instruments
- 50 News items
- 52 Up, at Shea
- 53 Robin Cook chiller
- 54 Nerd
- 55 Silkworm
- 56 Juniors
- 57 See 6 Across
- 58 Roentgen discovery

Washington State Classifieds

ADVERTISE STATEWIDE with a \$325 classified listing or \$1,575 for a display ad. Call this newspaper or 360-344-2938 for details.

protection. Schedule a FREE LeafFilter estimate today. 15% off Entire Purchase. 10% Senior & Military Discounts. Call 1-888-360-1582.

ATTENTION: OXYGEN USERS. Gain freedom with a Portable Oxygen Concentrator! No more heavy tanks & refills! Guaranteed lowest prices. Call the Oxygen Concentrator store: 844-495-7230.

GENERAC Standby Generators provide backup power during utility power outages, so your home and family stay safe and comfortable. Prepare now. Free 7-year extended warranty (\$695 value!). Request a free quote today! Call for additional terms and conditions. 1-888-674-7053.

DONATE YOUR CAR TO CHARITY. Receive maximum value of write off for your taxes. Running or not! All conditions accepted. Free pickup. Call for details, 855-635-4229.

LOOKING FOR ASSISTED LIVING, memory care, or independent living? A Place for Mom simplifies the process of finding senior living at no cost to your family. Call 1-855-913-2628 today!

ELIMINATE GUTTER CLEANING FOREVER! LeafFilter, the most advanced debris-blocking gutter

SUDOKU

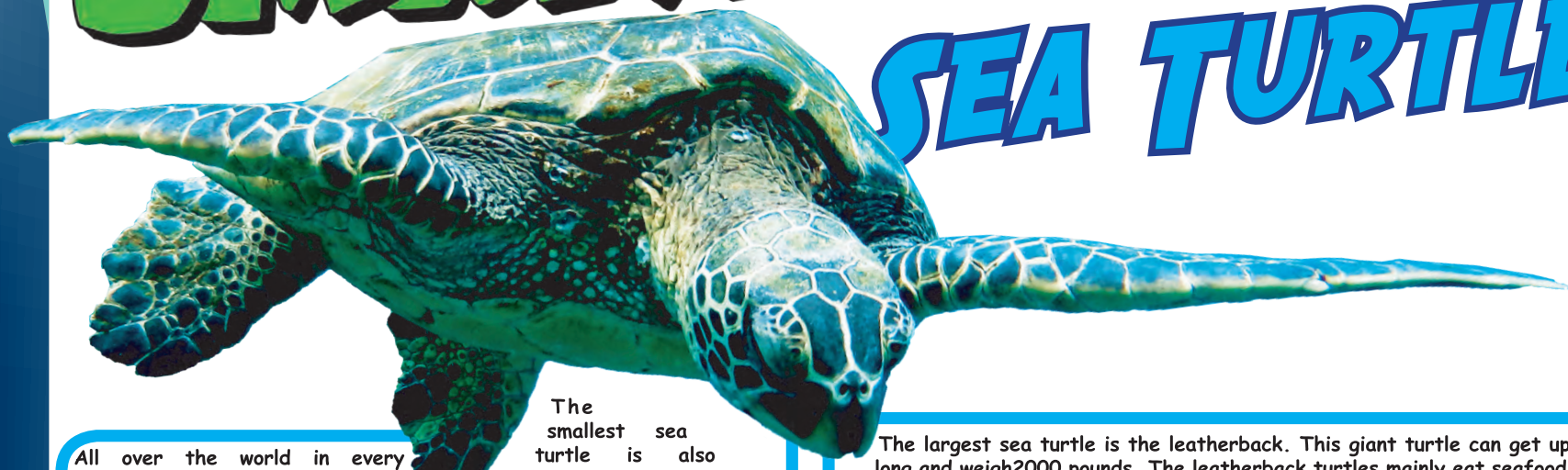
	4		8				2	
1				2				6
9			1		6	8		
		4		6		9		
	7		3		9		6	
		8		4		3		
		3	6		2			7
7				5				8
	1				8		5	





# SMARTYPANTS

## SEA TURTLES



All over the world in every ocean you will find sea turtles and they have been around since the times of the dinosaurs. There are seven species of sea turtles: the leatherback, green, hawksbill, loggerhead, olive Ridley, hawk's Ridley and the flatback. Even though they are all turtles each species has a place they like to live, food they like to eat and various physical characteristics that help us tell them apart. Six of the seven species of sea turtles are threatened or endangered.

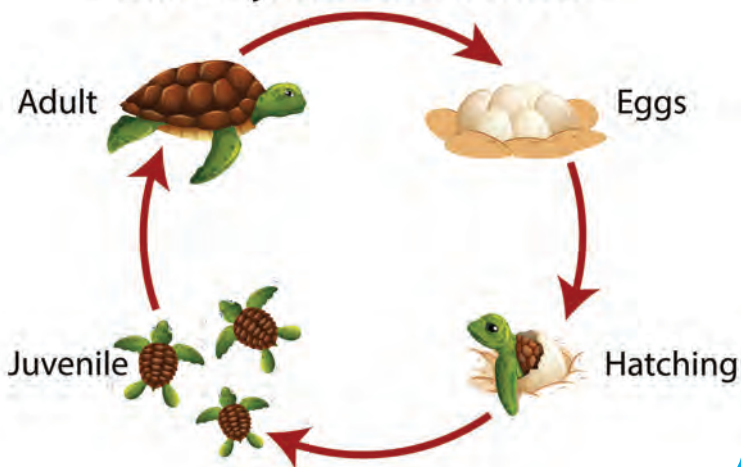
The smallest sea turtle is also the rarest and most endangered sea turtle. The Kemp's Ridley sea turtle lives in the Atlantic Ocean from Canada down to the Gulf of Mexico. Kemp's turtles are meat eaters, or carnivores and their favorite food is crab. They are endangered mostly due to habitat loss but also because of pollution.

The largest sea turtle is the leatherback. This giant turtle can get up to 8 feet long and weigh 2000 pounds. The leatherback turtles mainly eat seafood that looks like jelly. Their two favorite foods are jellyfish and sea squirts. This turtle is endangered partly because a plastic bag floating around in the ocean looks an awful lot like a jellyfish. The turtles try to eat the bag but can't digest it.



Sea turtles migrate between their feeding grounds and nesting grounds. Some of them travel thousands of miles to get back to the beach where they were born. Then they lay their own eggs on that beach. One turtle named Yoshi that is being tracked by scientists traveled over 22,000 miles in 2020. A female turtle will lay 80-120 eggs in the nest she digs. The eggs will incubate for 60 days and then the baby turtles come out of the nest. Getting from the nest to the water is a very dangerous time in the baby turtle's life.

### Life Cycle of a Turtle



### Sea Turtle Word Search

J U S S Q X X X  
 C B C O N S U M E D R D  
 Q O Q Z H W G D N Z P D I R  
 L E A T H E R H E A D L J Z D E  
 F R K S M L O G G E R H E A D H L E  
 S Z Y V C P O L L U T I O N E T B E  
 E J E L L Y F I S H R D O O F A E S D Y  
 P R W G S S S T D W A E S L B E A C H U  
 Q P A O D K F D L H A B I T A T Y T H L  
 J F L R F E E E K X N J U M I J H A E B  
 F O S D Q I O R G T C D D U O O Y W R A E  
 S C I T S I R E T C A R A H C K O K L G  
 Y R Z X X D X G K S M N N D S V Z T N O  
 N R F O C E A N S P E S Q B I H R I Y Z  
 E R E K B X A P E O G I N R U T F G  
 G E C E J R D A C J L R T T S I W V  
 W R Q D A N C I L A T R E H V U  
 T G D I E R E C A C N K B S  
 K P B N S S B L R A P B  
 Y S G N V X F Z

- |                 |             |           |
|-----------------|-------------|-----------|
| BEACH           | HABITAT     | POLLUTION |
| CARNIVORE       | HAWKSBILL   | RARE      |
| CHARACTERISTICS | JELLYFISH   | RIDLEY    |
| CONSUMED        | LEATHERHEAD | SEA       |
| ENDANGERED      | LOGGERHEAD  | SEAFOOD   |
| FEEDING         | NESTING     | SPECIES   |
| GREEN           | OCEANS      | TURTLE    |

### Sea Turtle Crossword



- ACROSS**
- A soft sea animal that has a jelly like body and no bones
  - A special quality that makes one thing different from another
  - Not often found or seen
  - A group of similar organisms that are able to reproduce
  - Huge bodies of salt water that cover 71 percent of the Earth's surface
  - A reptile that has a shell covering its body
  - The act of being fed
- DOWN**
- When the environment is contaminated or made dirty by harmful substances
  - Any type of animal or plant that is in danger of disappearing forever
  - A place that an animal lives
  - An animal that eats only meat
  - To eat or drink especially in great quantities
  - Saltwater plants, fish and shellfish that are consumed as food
  - A landform found along a coast or ocean
  - When an animal builds a nest to house their babies

What do Sea Turtles use to communicate?



Shell phones!

### Read all about Sea Turtles

Sea Turtles  
by Laura F. Marsh

Amazing Animals: Sea Turtles  
by Kate Riggs

Turtle Tide: The Ways of Sea Turtles  
by Stephen R. Swinburne



SMARTYPANTS is a publication of Cimarron Valley Communications, LLC © 2020, all rights reserved. www.smartypantsnews.com

ANSWERS: Crossword Puzzle Across: 2. Jellyfish 6. Characteristics 9. Rare 10. Species 11. Oceans 12. Turtle 13. Feeding Down: 1. Pollution 3. Endangered 4. Habitat 5. Carnivore 7. Seafood 8. Beach 14. Nesting

**THIS PAGE SPONSORED BY THE FOLLOWING COMMUNITY-MINDED BUSINESSES:**

**Walls & Windows**  
Where Well Dressed Windows Choose to Shop! Since 1982  
4131 Hannegan Road, Ste 104, Bellingham  
360-676-5223 • wallsandwindowsinc.com

building supply  
**WESTSIDE**  
8353 Guide Meridian • Lynden • 360-354-5617

Pete and Nita Harksell  
Owners  
**Pete's Auto Repair, LLC**  
Professional Car Care  
Keeping Whatcom County Running since 1969  
6209 Portal Way, Ferndale WA Call 360-380-CARS (2277)  
www.petesautorepair.net

**Eagle Contracting**  
210 Hawley St. • Lynden  
360-318-9726 • LIC # EAGLECS951JD

**Lynden School District**  
1203 Bradley Road • Lynden  
www.lynden.wednet.edu

**Al's Electric & Plumbing**  
302 Hawley Street, Lynden • 360-354-2187

**Ferndale Record**  
360-384-1411  
www.ferndalerecord.com

Locally Owned & Operated Since 1929  
**Louis' AUTO GLASS**  
Bellingham: 360-734-3840  
Lynden: 360-354-3232  
Mount Vernon: 360-424-9759